



20' W/6 LADDER SECTION BILL OF MATERIAL (NL 20F93K02)

ITEM	QTY	PART NO.	DESCRIPTION	DWG NO.
1	2	WY3425	20" W/6 LADDER RAIL	C840372
2	7	WY8570	LADDER RUNG (9 HOLE)	C991003
3	2	WY3498	SPLICE PLATE	B820668
4	4	2500088	3/8" WASHER	C770404
5	1/8	2100056A	3/8x1-1/4 BOLT ASSEMBLY	C770404
6	REF	SEE CHART	MOUNTING CLAMP ASSY	SEE CHART

10' W/6 LADDER SECTION BILL OF MATERIAL (NL 10F93K02)

ITEM	QTY	PART NO.	DESCRIPTION	DWG NO.
1	2	WY3425	10" W/6 LADDER RAIL	C840372
2	4	WY8570	LADDER RUNG (9 HOLE)	C991003
3	2	WY3498	SPLICE PLATE	B820668
4	4	2500088	3/8" WASHER	C770404
5	1/2	2100056A	3/8x1-1/4 BOLT ASSEMBLY	C770404
6	REF	SEE CHART	MOUNTING CLAMP ASSY	SEE CHART

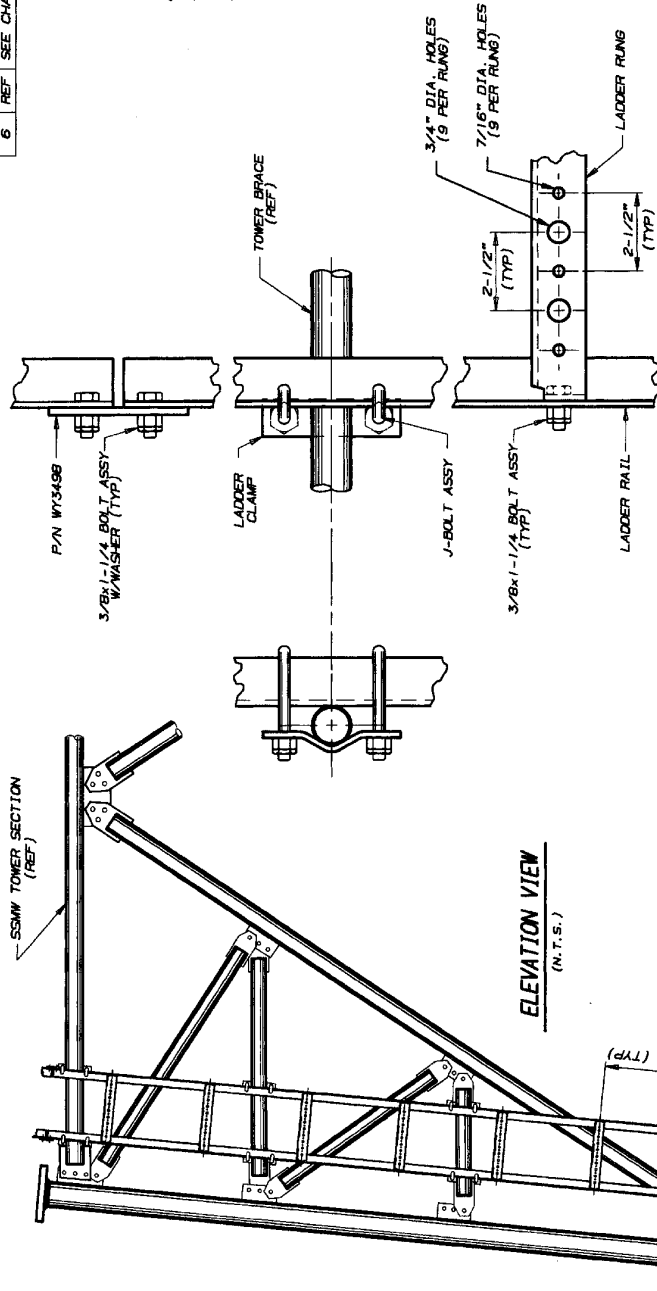
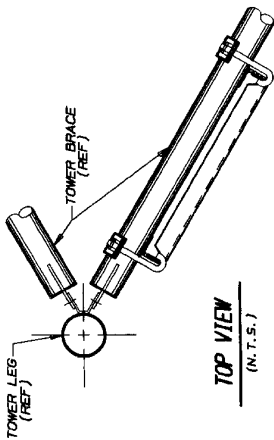
GENERAL NOTES

1. SPACE LADDER CLAMPS AS SHOWN.
2. THE W/6 LADDER MAY REQUIRE FIELD CUTTING TO THE PROPER LENGTH AFTER ASSEMBLY.
3. W/6 LADDER MAY BE MOVED HORIZONTALLY FOR PROPER CLEARANCE.
4. WASHERS ARE PROVIDED FOR ALL SLOTTED HOLES. W/6 LADDER MAY BE MOUNTED INSIDE OR OUTSIDE OF TOWER AS REQUIRED.

W/6 LADDER MOUNTING CLAMP ASSEMBLIES

CLAMP ASSEMBLY P/N	TOWER BRACE SIZE (O.D.)	LADDER CLAMP		J-BOLT	
		P/N	QTY	P/N	QTY
WY3080A	1-1/2"-2-3/8"	WY23	SK730352B	J444A	B2942A
WY3081A	2-7/8"-3-1/2"	WY23	SK730352B	J51A	B2947
WY3082A	4"-4-1/2"	WY24	SK730352B	J51A	B2947
WY3083A	5-9/16"	WY25	SK730358B	J51A	B2947
WY4858A	6"-5/8"	WY4858	B831316	J51A	B2947

CLAMP ASSEMBLY ORDERING INFO
 ORDER 1 CLAMP ASSEMBLY (SEE BRACE SIZE) FOR EACH HORIZONTAL BRACE THAT THE W/6 LADDER CROSSES.



NOTE: IF CIRCULAR W/6 IS USED, THREADED ADAPTERS, PROVIDED BY OTHERS, MAY BE REQUIRED TO PERFECTLY ALIGN W/6'S ON LADDER.

RI REVISED PART NUMBER: 7-29-99
 No. Revision Description: JDM
 Date: 7-29-99
 Rev. By: JDM
 Chd By: JDM
 App'd By: JDM

THIS DRAWING IS THE PROPERTY OF ROHN. IT IS NOT TO BE REPRODUCED OR COPIED IN ANY MANNER OR IN ANY MANNER WITHOUT OUR WRITTEN CONSENT.

By: SRH
 Date: 05/10/99
 Drawn: SRH
 Date: 05/10/99
 Checked: JDM
 Date: 5-12-99
 App. Eng.: TS
 Date: 6-15-99

Parent File: C991021

ROHN

LADDER ASSY W/6 FACE MTD FOR SSSWW TOWERS 9 HOLE 3" KD 2.50" O.C. 3/4" & 7/16" DIA.

DWG. NO.: C991021
 SHEET 1 OF 1
 REV.