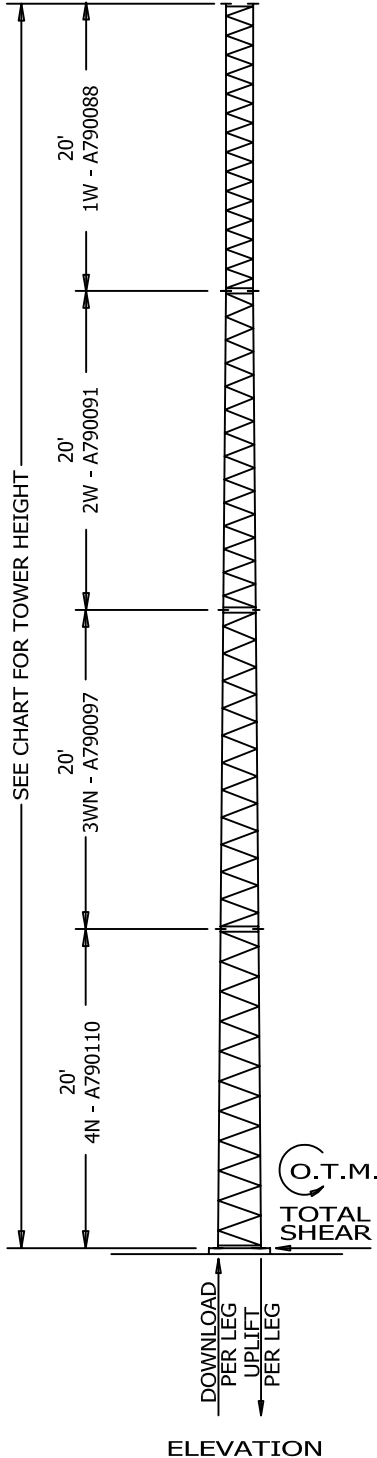


FILE NO. Standard-SSV	
REVISIONS	
REV.	DESCRIPTION
2	REDRAWN INTO AUTOCAD FORMAT
DATE: Aug/07/2007	
DWN	CHK
J.K.	J.M.
HA	HA



TOWER ASSEMBLY NUMBER	TOWER HEIGHT (FEET)	TOP SECTION	BASE SECTION		ALLOWABLE PROJECTED AREA (SQ. FT.)			BASE REACTIONS					
			PART NO.	SHORT BASE	FACE SPREAD	TOWER TOP ROUNDS	30 FEET BELOW TOP ROUNDS	FLATS	DOWNLOAD (POUNDS)	UPLIFT (POUNDS)	TOTAL SHEAR (POUNDS)	OTM (FOOT POUNDS)	
SS040D80EXC	40	1W	2W	SB2	1' 6	5.8	3.5	8.3	5.0	10,750	10,270	650	13,620
SS060D80EXC	60	1W	3WN	SB3	1' 10	4.2	2.5	5.8	3.5	16,230	15,530	750	25,070
SS080D80EXC	80	1W	4N	SB4	2' 2	3.3	2.0	5.0	3.0	23,060	22,010	980	42,180

GENERAL NOTES

1. TOWER DESIGNS ARE IN ACCORDANCE WITH APPROVED NATIONAL STANDARD ANSI/EIA-222-F-1996 (NO ICE).
2. EQUIVALENT FLAT-PLATE ANTENNA AREAS, BASED ON EIA RS-222-C, MUST NOT EXCEED THE AREAS SHOWN FOR FLAT MEMBER ANTENNAS.
3. TOWER DESIGNS ASSUME ALLOWABLE PROJECTED AREAS ARE SYMMETRICALLY PLACED ON THE TOWER.
4. DESIGNS ASSUME ONE 7/8 LINE TO TOP AND TWO 7/8 LINES TO 30 FEET BELOW TOP, ONE PER FACE.
5. DO NOT INSTALL OR DISMANTLE TOWERS WITHIN FALLING DISTANCE OF ELECTRICAL AND/OR TELEPHONE LINES.
6. TOWER ERECTION AND DISMANTLING MUST BE DONE BY QUALIFIED AND EXPERIENCED PERSONNEL.
7. INSTALL WARNING PLATE (P/N ACWS) IN A HIGHLY VISIBLE LOCATION.
8. ALL ANTENNA INSTALLATIONS MUST BE GROUNDED IN ACCORDANCE WITH LOCAL AND NATIONAL CODES
9. FOR ADDITIONAL BRACING DETAILS, SEE DRAWINGS SK720305 & A790135.
10. FOR TAPERED TOP DETAILS SEE DRAWING SK670407.
11. ALL TOWERS PROVIDED WITH (P/N 1TT) TAPERED TOP.
12. FOR FOUNDATION DETAILS SEE DRAWING D870480, A810214, C0730104 & B841300.



6718 WEST PLANK ROAD  
PEORIA, IL 61604  
TOLL FREE 800-727-ROHN

THESE DRAWINGS ARE THE PROPERTY OF ROHN PRODUCTS. ANY REPRODUCTION, COPIED OR TRACED IN WHOLE OR IN PART, WITHOUT OUR WRITTEN CONSENT.

ERECTION PROFILE  
40'-80', 80MPH, ANSI/EIA-222-F, NO ICE

DWN: R.S  
CHKD: GPW  
DATE: Aug/25/2007

ENGR: B.M  
DRAWING NO: C881240

REV: 2