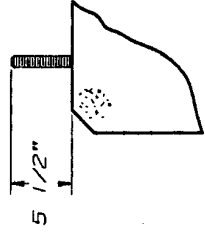
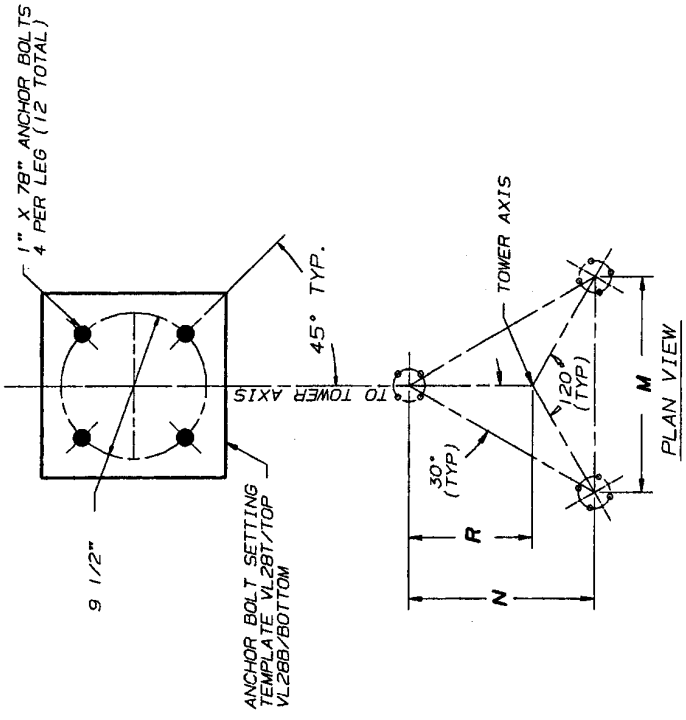




ID#	M	N	R
ABL4D1	6' 9	5' 10 1/8	3' 10 3/4
ABL4D2	8' 9	7' 6 15/16	5' 0 5/8
ABL4D3	10' 9	9' 3 11/16	6' 2 1/2
ABL4D4	12' 9	11' 0 1/2	7' 4 5/16
ABL4D5	14' 9 1/4	12' 9 1/2	8' 6 5/16
ABL4D6	16' 9 1/4	14' 6 5/16	9' 8 3/16
ABL4D7	18' 9 1/4	16' 3 1/16	10' 10 1/16
ABL4D8	20' 9 3/8	17' 11 15/16	12' 0
ABL4D9	22' 9 3/8	19' 8 3/4	13' 1 13/16
ABL4D10	24' 9 3/8	21' 5 9/16	14' 3 11/16
ABL4D11	8' 8 1/2	7' 6 1/2	5' 0 5/16
ABL4D12	10' 8 1/2	9' 3 5/16	6' 2 3/16
ABL4D13	12' 8 1/2	11' 0 1/16	7' 4 1/16
ABL4D14	14' 11 1/2	12' 11 7/16	8' 7 5/8
ABL4D15	17' 5 1/2	15' 1 7/16	10' 0 15/16
ABL4D16	19' 11 1/2	17' 3 7/16	11' 6 1/4
ABL4D17	22' 5 1/2	19' 5 3/8	12' 11 5/8
ABL4D18	24' 11 1/2	21' 7 3/8	14' 4 15/16
ABL4D19	27' 5 1/2	23' 9 3/8	15' 10 1/4
ABL4D20	29' 11 1/2	25' 11 5/16	17' 3 9/16
ABL4D21	8' 7 1/2	7' 5 5/8	4' 11 3/4
ABL4D22	10' 7 1/2	9' 2 7/16	6' 1 5/8
ABL4D23	12' 7 1/2	10' 11 3/16	7' 3 7/16
ABL4D24	14' 10 1/2	12' 10 9/16	8' 7 1/16
ABL4D25	12' 10	11' 1 3/8	7' 4 15/16
ABL4D26	14' 10 1/4	12' 10 3/8	8' 6 15/16



ANCHOR BOLT PROJECTION

NOTES

- FOR ANCHOR AND FOUNDATION TOLERANCES REFER TO THE LATEST REVISION OF DWG. NO. AB10214.
- ALL ANCHOR BOLTS SHALL MEET OR EXCEED REQUIREMENTS OF ASTM A354 GR BC AND ARE HOOKED 180° AT THE BOTTOM.
- WHEN FOUNDATIONS ARE DESIGNED BY OTHERS, IT SHALL BE THE RESPONSIBILITY OF THE PURCHASER'S FOUNDATION ENGINEER TO INSURE THAT THE ANCHORAGES PROVIDED ARE COMPATIBLE WITH THE PROPOSED FOUNDATION DESIGNS AND THAT THE CAPACITIES OF THE ANCHORAGES ARE NOT LIMITED BY THE STRENGTH OF THE FOUNDATIONS.
- FOR ANCHOR BOLT TEMPLATE DETAILS SEE DRAWING B730521.

Revised	ABL4D7 (N-DIMENSION)	1-10-96	PJD	ZM	7
Date	Rev. By	Cyc	By	App.	By
THIS DRAWING IS THE PROPERTY OF ROHN. IT IS NOT TO BE REPRODUCED OR TRANSMITTED IN ANY FORM OR BY ANY MEANS WITHOUT OUR WRITTEN CONSENT.					
Scale	None	By	Date	Title	
Drawn	PJD	12/19/96	ANCHOR BOLT LAYOUT		
Checked	JDM	1-2-96	FOR (4) 1" DIAMETER ANCHOR BOLTS		
App. Eng.	TS	1-4-96	ROHN		
App. Sales	AL	1-4-96	DRAWING NO.: C951724R1		