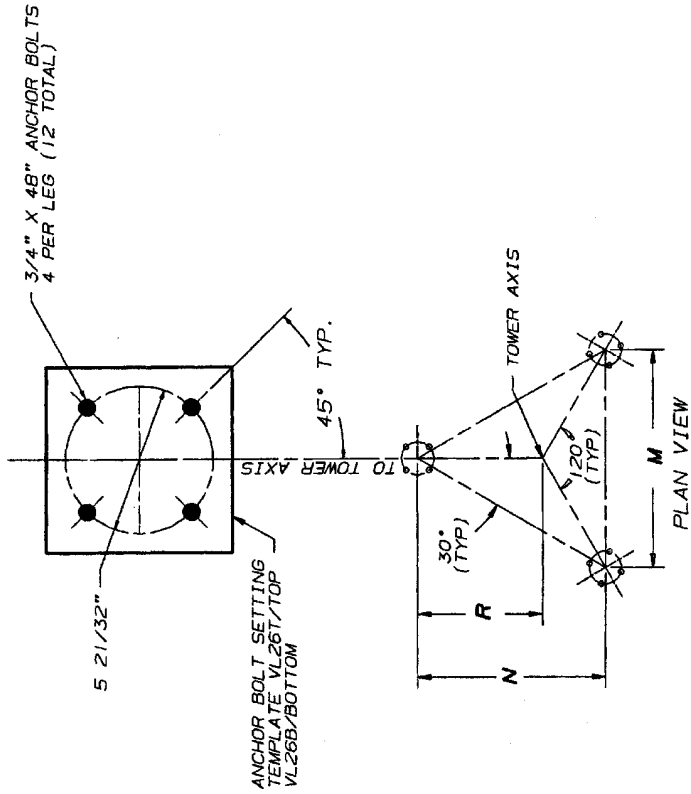




ID#	M	N	R
ABL4B1	4' 7 1/4	3' 11 7/8	2' 7 7/8
ABL4B2	6' 7 1/4	5' 8 5/8	3' 9 3/4
ABL4B3	8' 7 1/4	7' 5 7/16	4' 11 5/8
ABL4B4	10' 7 1/4	9' 2 3/16	6' 1 7/16
ABL4B5	12' 7 1/4	10' 11	7' 3 5/16
ABL4B6	8' 6	7' 4 5/16	4' 10 7/8
ABL4B7	5' 0 1/2	4' 4 3/8	2' 10 15/16
ABL4B8	8' 8 1/4	7' 6 5/16	5' 0 3/16



ANCHOR BOLT PROJECTION

NOTES

- FOR ANCHOR AND FOUNDATION TOLERANCES REFER TO THE LATEST REVISION OF DWG. NO. AB10214.
- ALL ANCHOR BOLTS SHALL MEET OR EXCEED REQUIREMENTS OF ASTM A354 GR BC AND ARE HOOKED 180° AT THE BOTTOM.
- WHEN FOUNDATIONS ARE DESIGNED BY OTHERS, IT SHALL BE THE RESPONSIBILITY OF THE PURCHASER'S FOUNDATION ENGINEER TO INSURE THAT THE ANCHORAGES PROVIDED ARE COMPATIBLE WITH THE PROPOSED FOUNDATION DESIGNS AND THAT THE CAPACITIES OF THE ANCHORAGES ARE NOT LIMITED BY THE STRENGTH OF THE FOUNDATIONS.
- FOR ANCHOR BOLT TEMPLATE DETAILS SEE DRAWING B730521.

No. \blacktriangle Revision Description		Date \blacktriangle Rev. By \blacktriangle Chd. By \blacktriangle App'd. By	
THIS DRAWING IS THE PROPERTY OF ROHN. IT IS NOT TO BE REPRODUCED, COPIED OR TRACED IN WHOLE OR IN PART WITHOUT OUR WRITTEN CONSENT.			
Scale: NONE	By	Date	Title:
Drawn: PJD	12/15/95		ROHN
Checked: JDM	1-2-96		ANCHOR BOLT LAYOUT
App. Eng.: JT	1-11-96		FOR (4) 3/4" DIAMETER ANCHOR BOLTS
App. Sales: J	1/4/96		DWG. FILE: C951722