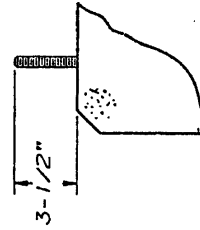
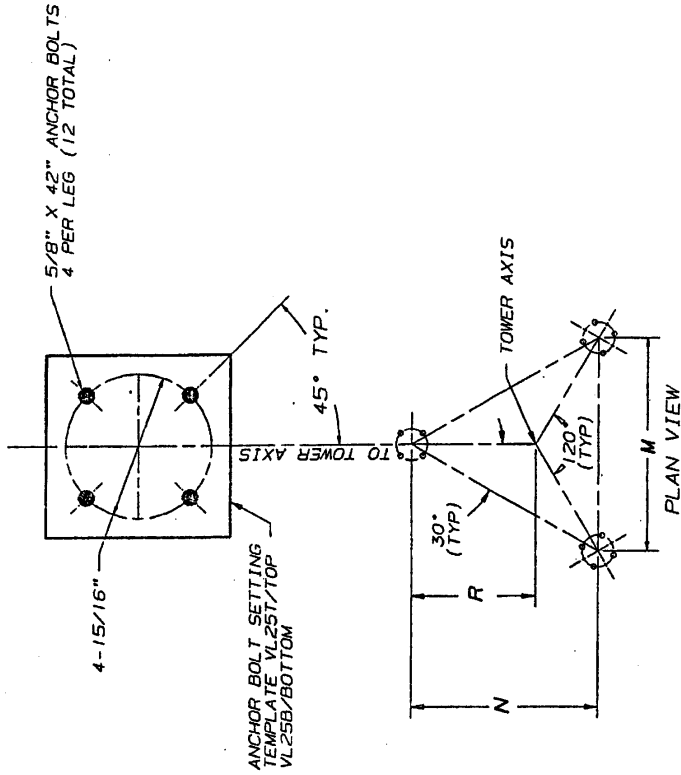




ID#	M	N	R
ABL4A1	4' 6-1/4	3' 11	2' 7-5/16
ABL4A2	4' 6-3/4	3' 11-7/16	2' 7-5/8
ABL4A3	6' 6-3/4	5' 8-3/16	3' 9-1/2
ABL4A4	8' 6-3/4	7' 5	4' 11-5/16
ABL4A5	10' 6-3/4	9' 1-3/4	6' 1-3/16
ABL4A6	6' 6-1/4	5' 7-3/4	3' 9-3/16
ABL4A7	8' 7-3/4	7' 5-7/8	4' 11-15/16



ANCHOR BOLT PROJECTION

NOTES

1. FOR ANCHOR AND FOUNDATION TOLERANCES REFER TO THE LATEST REVISION OF DWG. NO. AB10214.
2. ALL ANCHOR BOLTS SHALL MEET OR EXCEED REQUIREMENTS OF ASTM A354 GR BC AND ARE HOOKED 180° AT THE BOTTOM.
3. WHEN FOUNDATIONS ARE DESIGNED BY OTHERS, IT SHALL BE THE RESPONSIBILITY OF THE PURCHASER'S FOUNDATION ENGINEER TO INSURE THAT THE ANCHORAGES PROVIDED ARE COMPATIBLE WITH THE PROPOSED FOUNDATION DESIGNS AND THAT THE CAPACITIES OF THE ANCHORAGES ARE NOT LIMITED BY THE STRENGTH OF THE FOUNDATIONS.
4. FOR ANCHOR BOLT TEMPLATE DETAILS SEE DRAWING B730521.

No. & Revision Description		Date		Rev. By		Crc. By		App. By	
THIS DRAWING IS THE PROPERTY OF ROHN. IT IS NOT TO BE REPRODUCED OR TRANSMITTED IN ANY FORM OR BY ANY MEANS, WITHOUT OUR WRITTEN CONSENT.									
Title:				ROHN					
Series:		NOE		By:		Date:		12/08/95	
Drawn:		PJD		Checked:		Date:		1-2-96	
App. Eng.:		TS		Date:		1-4-96		1/4/96	
App. Sales:		A		Date:		1/4/96		1/4/96	
Anchor Bolt Layout FOR (4) 5/8" DIAMETER ANCHOR BOLTS								DRAWING NO.: C951721	