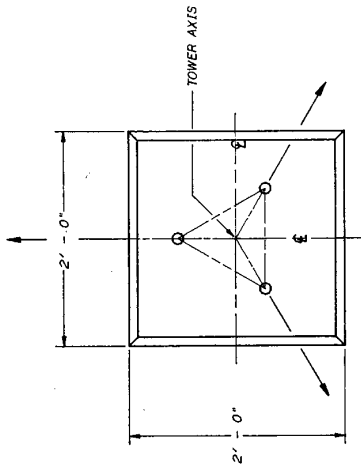
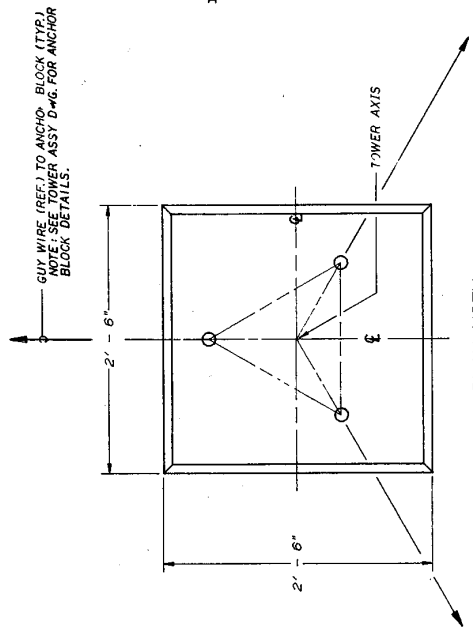


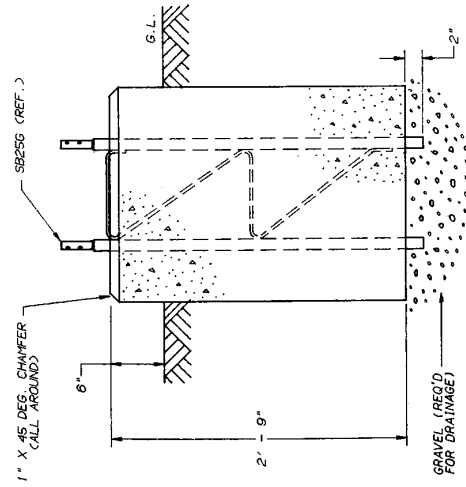
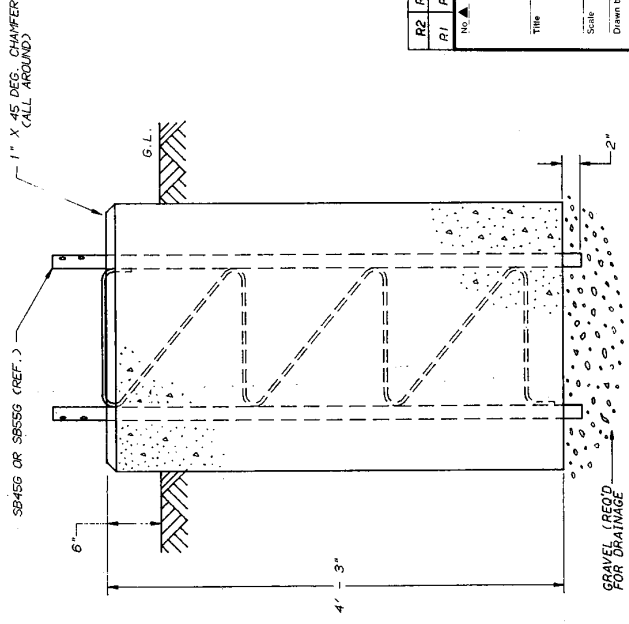


GENERAL NOTES
 1. See drawing number 380300 for general foundation notes except as noted.



PLAN VIEW

PLAN VIEW



SHORT BASE DETAILS FOR 25G

SHORT BASE DETAILS FOR 45G AND 55G

CONCRETE QUANTITIES
 FOR 25G BASE PIER = 0.41 CU YDS.
 FOR 45G BASE PIER = 1.00 CU YDS.
 FOR 55G BASE PIER = 1.00 CU YDS.

R2	REVISED GENERAL NOTES	4/13/57	J/P/B
R1	REV NOTE 3 & ADD NOTE 4 AND GUY NOTE	3/28/55	WRF
No.	Revision Description	Date	By
UNR-Rohn Division of UNR, Inc.			
Title: SHORT BASE AND BASE PIER INSTALLATION DETAIL (FOR 25G, 45G AND 55G)			
Scale:	NONE	Unless otherwise specified dimensions are given in inches.	
Drawn by:	GPW	03-12-55	
Checked by:	J.P.	5-17-57	
Approved by Engineering:	J.P.	7-29-57	
Approved by Production:			
File Number:			
Approved by Sales:			
Ordering Number:			C850506 R2