



BILL OF MATERIAL			
QTY.	PART NO.	DESCRIPTION	DWG. NO.
2	EP25 3	3-HOLE EQUALIZER P.S.	C 660416
1	2100496A	3/4" X 2 1/4" BOLT ASS'Y	
3	2100206A	1/2" X 2" BOLT ASS'Y	
1	720004	PLASTIC BAG 6" X 9"	
2	EP25 5	5-HOLE EQUALIZER P.S.	C 660416
1	2100496A	3/4" X 2 1/4" BOLT ASS'Y	
5	2100206A	1/2" X 2" BOLT ASS'Y	
1	720006	PLASTIC BAG 9" X 13"	
1	260004P	5/8" X 1/8" WALL ANCHOR	
2	K1466	5" X 5" X 1/4" RETAINER P.S.	
1	EP 2534 3	EQUALIZER PLATE KIT	
1	GAW 25	WALL ANCHOR ASS'Y	
1	EP 2534 5	EQUALIZER PLATE KIT	
1	GAW 25	WALL ANCHOR ASS'Y	

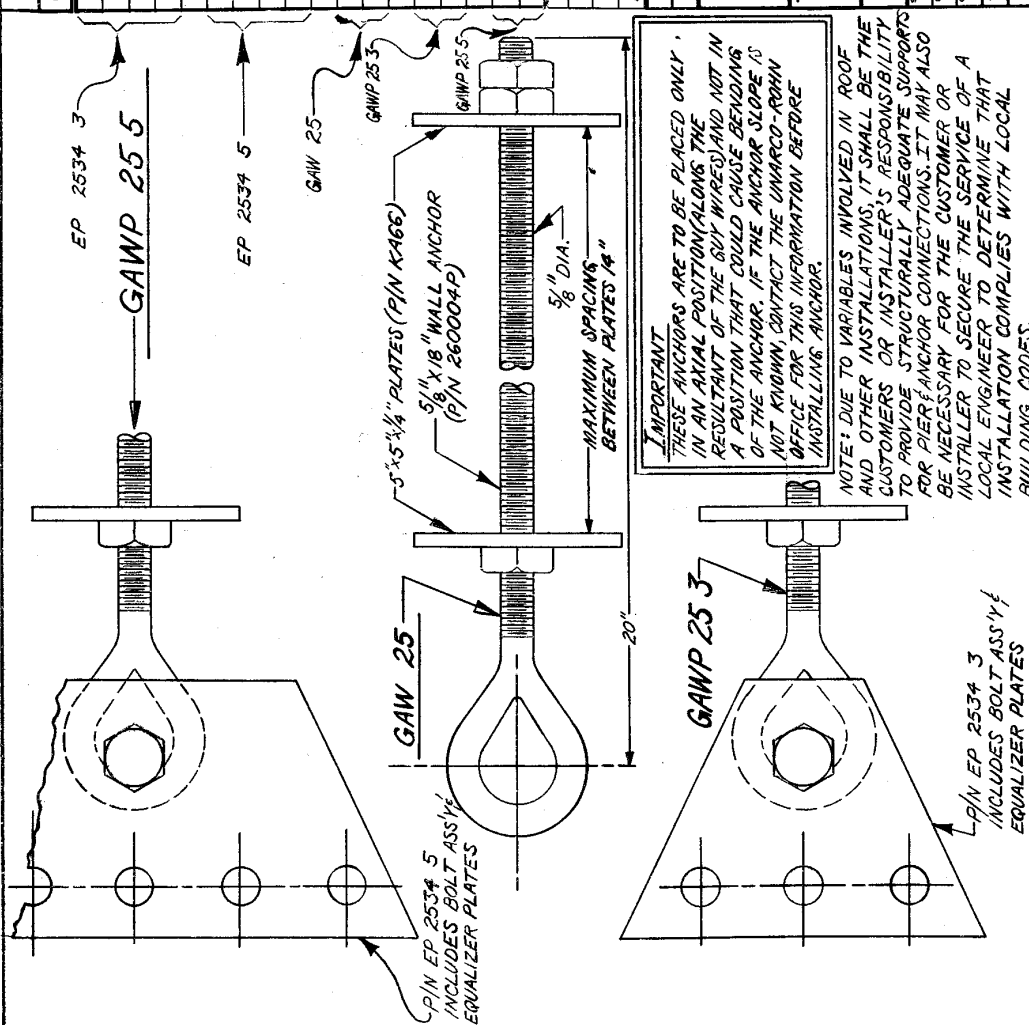
NO.	DESCRIPTION	DATE	BY
R1	1/2" X 2" BOLT ASS'Y WAS 1/2" LG.	9-27-82	W.A.S.
R2	ADDED NOTE	10-15-80	W.A.S.
R3	ADDED BILLS OF MATERIAL	6-2-77	W.A.S.
R4	ADDED NOTE	7-6-76	D.H.

ROHN®

WALL & ROOF ANCHOR

FILE NO. B 710804 R4

DATE 8-6-71



IMPORTANT
 THESE ANCHORS ARE TO BE PLACED ONLY IN AN AXIAL POSITION ALONG THE LENGTH OF THE GUY WIRE AND NOT IN A POSITION THAT COULD CAUSE BENDING OF THE ANCHOR. IF THE ANCHOR SLOPE IS NOT KNOWN, CONTACT THE UNARCO-ROHN OFFICE FOR THIS INFORMATION BEFORE INSTALLING ANCHOR.

NOTE: DUE TO VARIABLES INVOLVED IN ROOF AND OTHER INSTALLATIONS, IT SHALL BE THE CUSTOMER'S OR INSTALLER'S RESPONSIBILITY TO PROVIDE STRUCTURALLY ADEQUATE SUPPORTS FOR PIER ANCHOR CONNECTIONS. IT MAY ALSO BE NECESSARY FOR THE CUSTOMER OR INSTALLER TO SECURE THE SERVICE OF A LOCAL ENGINEER TO DETERMINE THAT INSTALLATION COMPLIES WITH LOCAL BUILDING CODES.