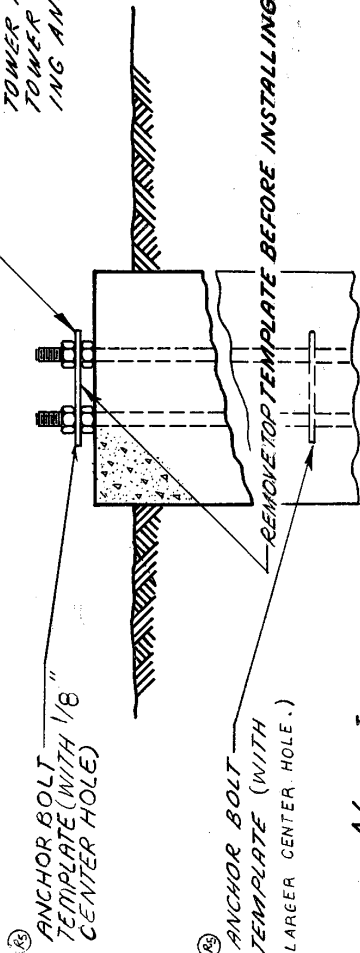




ANCHOR BOLT SETTING TEMPLATE - (SEE ANCHOR BOLT LAYOUT OF EACH TOWER SITE FOR TEMPLATE PART NO.) FOR 6" THRU 14" PIPE LEGS ONLY LOCATE TEMPLATE SUCH THAT DESCRIBED LINE PASSING THRU CENTER HOLE & 2 CENTER PUNCH MARKS IS ON LINE TO TOWER AXIS. SEE ANCHOR BOLT LAYOUT OF EACH TOWER SITE FOR FURTHER INFORMATION CONCERNING ANCHOR BOLT ORIENTATION.

CHECK ANCHOR BOLT SIZE, NO., SPACING, & BOLT CIRCLE DIA. ON TEMPLATE AGAINST ANCHOR BOLT LAYOUT DRAWINGS BEFORE INSTALLATION.



NOTE: IT IS THE RESPONSIBILITY OF THE FOUNDATION CONTRACTOR TO VERIFY THAT THE CORRECT ANCHOR BOLT TEMPLATE AND FOUNDATION DIMENSIONS SHOWN ON RESPECTIVE SITE DRAWINGS ARE BEING USED.

NO.	DESCRIPTION	DATE	BY
R1	REVISED AND ADDED NOTE AS MARKED	8/13/72	277
R2	REVISED LEG SIZE	10/13/73	OH
R3	CORRECTED LEG SIZE	4/20/79	GLS
R4	ADD NOTE.	12/29/87	GLS

**ROHN** MANUFACTURING  
DIVISION OF

TITLE  
**ANCHOR BOLT TEMPLATE INSTALLATION**

THIS DRAWING IS THE PROPERTY OF ROHN. IT IS NOT TO BE REPRODUCED, COPIED, OR TRACED IN WHOLE OR IN PART WITHOUT OUR WRITTEN CONSENT.

SCALE: ~ MATERIAL: FINISH: WT.

UNLESS OTHERWISE SPECIFIED, DIMENSIONS ARE GIVEN IN INCHES.

DATE: 4-7-73  
DATE: 4-13-73  
DATE: 4-13-73  
DATE: 4-12-73

DOWN BY: Q.A.  
CHK'D BY: T.S.  
APPR. ENGR: D.W.  
APPR. SALES: H.K.

TOLERANCES: DEC. 1/16" ANGLES 1/2"

DWG. NO. B 730521 R5

R5 REVISED ANCHOR BOLT TEMPLATES 12-29-87 FHT/JHQ