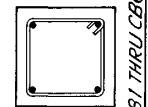
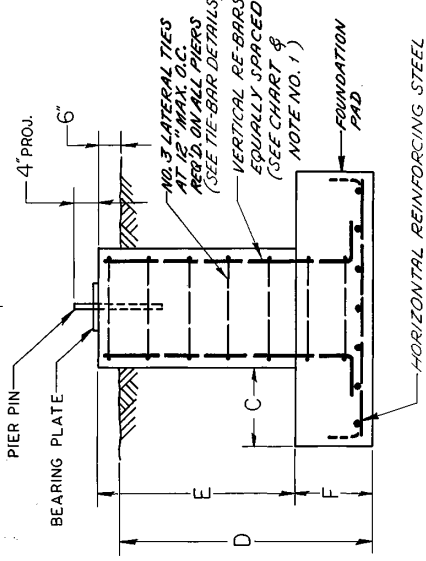
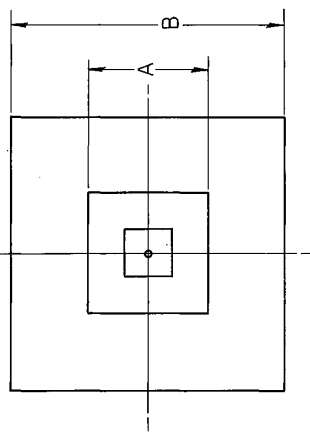


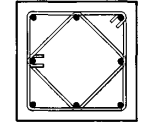


CONCRETE BASE SCHEDULE

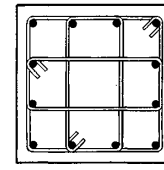
CB NO.	Tower Base Reaction	DIMENSIONS						BEARING PLATE	CONC. (cu. yds.)	VERTICAL BARS (NO. & SIZE)	HORIZ. BARS (NO. & SIZE)
		A	B	C	D	E	F				
1	14000	2'-0"	2'-0"	0	4'-0"	0	0	BP 6	.70	4-NO. 6	NONE*
2	22000	2'-6"	2'-6"	0	4'-0"	0	0	BP 6	1.00	4-NO. 6	NONE*
3	32000	3'-0"	3'-0"	0	4'-0"	0	0	BP 6	1.50	4-NO. 6	NONE*
4	44000	3'-6"	3'-6"	0	4'-0"	0	0	BP 6	2.10	4-NO. 6	NONE*
5	58000	2'-0"	4'-0"	1'-0"	4'-0"	3'-3"	1'-3"	BP 6	1.22	4-NO. 6	6-NO. 4
6	74000	2'-0"	4'-6"	1'-3"	4'-0"	3'-3"	1'-3"	BP 6	1.42	4-NO. 6	6-NO. 5
7	90000	2'-0"	5'-0"	1'-6"	4'-6"	3'-9"	1'-3"	BP 10	1.70	8-NO. 6	6-NO. 5
8	109000	2'-0"	5'-6"	1'-9"	4'-6"	3'-9"	1'-3"	BP 10	2.00	8-NO. 6	6-NO. 5
9	130000	2'-0"	6'-0"	2'-0"	4'-6"	3'-6"	1'-6"	BP 10	2.50	8-NO. 6	7-NO. 5
10	150000	2'-0"	6'-6"	2'-3"	4'-6"	3'-6"	1'-6"	BP 10	2.90	8-NO. 6	8-NO. 5
11	173000	2'-6"	7'-0"	2'-3"	5'-0"	3'-9"	1'-9"	BP 15	4.00	8-NO. 7	8-NO. 6
12	198000	2'-6"	7'-6"	2'-6"	5'-0"	3'-9"	1'-9"	BP 15	4.50	8-NO. 7	8-NO. 6
13	224000	2'-6"	8'-0"	2'-9"	5'-0"	3'-9"	1'-9"	BP 15	5.00	8-NO. 7	9-NO. 6
14	257000	3'-0"	8'-6"	2'-9"	5'-0"	3'-6"	2'-0"	BP 15	6.50	12-NO. 7	9-NO. 7
15	279000	3'-0"	9'-0"	3'-0"	5'-0"	3'-6"	2'-0"	BP 15	7.20	12-NO. 7	10-NO. 7



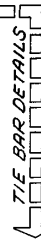
CBI THRU CB6



CB7 THRU CB13



CB14 & CB 15



NO.	DESCRIPTION	DATE	BY
R2	ADDED NOTE	7-6-76	DA
R1	RE-DRAWN - SUPERSEDES C-6106210	2-28-75	DA

ROHN MANUFACTURING
DIVISION OF

TITLE: CONCRETE BASE SCHEDULE

THIS DRAWING IS THE PROPERTY OF ROHN. IT IS NOT TO BE REPRODUCED, COPIED, OR TRANSMITTED IN ANY FORM OR BY ANY MEANS, WITHOUT THE WRITTEN PERMISSION OF ROHN.

DATE: 7-6-76
DRAWN BY: DA
CHECKED BY: DA
APPROVED BY: DA
SCALE: AS SHOWN

REVISIONS:

NO. DESCRIPTION DATE BY

FOR REQUIRED MATERIAL SPECIFICATION, INSTALLATION NOTES AND TOLERANCES SEE DRAWING NUMBER B841300.

1. VERTICAL REINFORCING STEEL MAY BE PLACED WITH AN OPTIONAL STANDARD ACI 90° BEND AT BOTTOM.

2. BEARING PLATE PROVIDED ONLY ON TOWERS WITH ANGLED BASE.

*3. HORIZ. BARS IN CHART REFER ONLY TO THE BARS IN THE FOUNDATION PAD.

REV.	DATE	BY	CHKD.	DESCRIPTION
R6	1-9-85	AKB		REV. GEN. NOTES ADDED B841300 NOTE.
R5	1-21-80	WMD		ADDED GENERAL NOTE #9
R4	3/17/77	GLS		REMOVED R3-232-B FROM CHART NOTE NO. 7.
R3	2/29/78	GLS		DELETED SIZE PIER PIN.