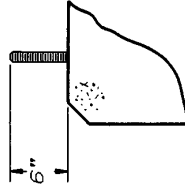
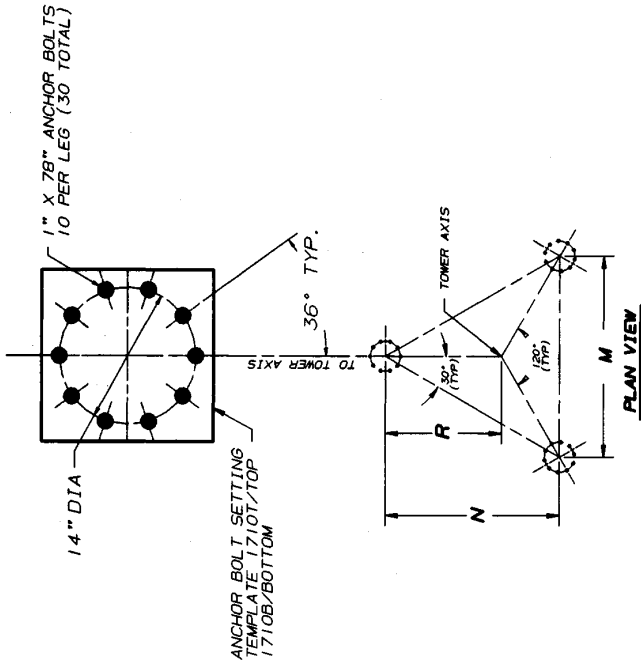




ID#	M	N	R
ABL101	18' 11 7/8	16' 5 3/8	10' 11 9/16
ABL102	21' 0	18' 2 1/4	12' 1 1/2
ABL103	23' 0	19' 11	13' 3 3/8
ABL104	25' 0	21' 7 13/16	14' 5 3/16
ABL105	8' 11 1/8	7' 8 3/4	5' 1 7/8
ABL106	10' 11 1/8	9' 5 9/16	6' 3 11/16
ABL107	12' 11 1/8	11' 2 5/16	7' 5 9/16
ABL108	15' 2 1/8	13' 1 3/4	8' 9 1/8
ABL109	17' 8 1/8	15' 3 11/16	10' 2 1/2
ABL1010	20' 2 1/8	17' 5 11/16	11' 7 13/16
ABL1011	22' 8 1/8	19' 7 11/16	13' 1 1/8
ABL1012	25' 2 1/8	21' 9 5/8	14' 6 7/16
ABL1013	27' 8 1/8	23' 11 5/8	15' 11 3/4
ABL1014	30' 2 1/8	26' 1 5/8	17' 5 1/16
ABL1015	32' 8 1/8	28' 3 9/16	18' 10 3/8
ABL1016	36' 5 1/8	31' 6 9/16	21' 0 3/8
ABL1017	40' 2 1/8	34' 9 9/16	23' 2 3/8
ABL1018	43' 11 1/8	38' 0 1/2	25' 4 5/16
ABL1019	47' 8 1/8	41' 3 1/2	27' 6 5/16
ABL1020	51' 5 1/8	44' 6 7/16	29' 8 5/16
ABL1021	55' 2 1/8	47' 9 7/16	31' 10 5/16
ABL1022	18' 10 1/4	16' 3 15/16	10' 10 5/8
ABL1023	22' 10 3/8	19' 9 5/8	13' 2 7/16
ABL1024	16' 10 1/4	14' 7 3/16	9' 8 3/4
ABL1025	20' 10 3/8	18' 0 13/16	12' 0 1/2
ABL1026	40' 0 1/2	34' 8 1/8	23' 1 3/8
ABL1027	16' 11 7/8	14' 8 9/16	9' 9 11/16



ANCHOR BOLT PROJECTION

R3	ADDED	ABL1022-ABL1027	12/18/88	PJD	JRM	75
R2	REVISED	NOTE 2	8/9/88	WEB	WOU	75
R1	REVISED	PLAN VIEW	1-12-88	RKL	RKB	75
No. Revision Description			Date Rev. By. Ckd. By. App. By.			
THIS DRAWING IS THE PROPERTY OF ARAM. IT IS NOT TO BE REPRODUCED OR TRANSMITTED IN ANY FORM OR BY ANY MEANS, WITHOUT OUR WRITTEN CONSENT.			R O H N			
Drawn:	By:	Date:	Title:			
Checked:	PJB	8/9/88	10 HOLE ANCHOR BOLT LAYOUT			
App. Eng.:	RKL	8-11-88	DRAWING NO. 1. C860790 R3			
App. Supt.:	TS	8-12-88	ENG. FILE:			
	AE	8-12-88				

NOTES

- FOR ANCHOR AND FOUNDATION TOLERANCES REFER TO THE LATEST REVISION OF DWG. NO. ABL1021.4. ALL ANCHOR BOLTS SHALL MEET OR EXCEED REQUIREMENTS OF ASTM A-354 GR BC AND ARE HOOKED 180° AT THE BOTTOM.
- WHEN FOUNDATIONS ARE DESIGNED BY OTHERS, IT SHALL BE THE RESPONSIBILITY OF THE PURCHASER'S FOUNDATION ENGINEER TO INSURE THAT THE ANCHORAGES PROVIDED ARE CAPABLE OF WITHSTANDING THE FOUNDATION DESIGN LOADS AND THAT THE CAPACITIES OF THE ANCHORAGES ARE NOT LIMITED BY THE STRENGTH OF THE FOUNDATIONS.
- FOR ANCHOR BOLT TEMPLATE DETAILS SEE DRAWING B730521.