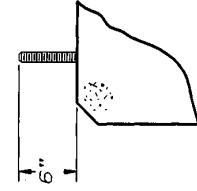
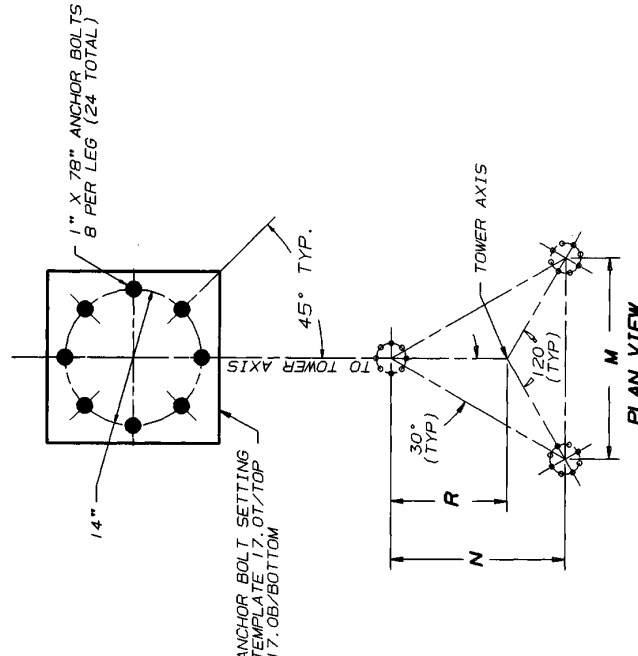




ID#	M	N	R
ABL81	18' 11 7/8	16' 5 3/8	10' 11 9/16
ABL82	21' 0	18' 2 1/4	12' 1 1/2
ABL83	23' 0	19' 11	13' 3 3/8
ABL84	25' 0	21' 7 13/16	14' 5 3/16
ABL85	8' 11 1/8	7' 8 3/4	5' 1 7/8
ABL86	10' 11 1/8	9' 5 9/16	6' 3 11/16
ABL87	12' 11 1/8	11' 2 5/16	7' 5 9/16
ABL88	15' 2 1/8	13' 1 3/4	8' 9 1/8
ABL89	17' 8 1/8	15' 3 11/16	10' 2 1/2
ABL90	20' 2 1/8	17' 5 11/16	11' 7 13/16
ABL91	22' 8 1/8	19' 7 11/16	13' 1 1/8
ABL92	25' 2 1/8	21' 9 5/8	14' 6 7/16
ABL93	27' 8 1/8	23' 11 5/8	15' 11 3/4
ABL94	30' 2 1/8	26' 1 5/8	17' 5 1/16
ABL95	32' 8 1/8	28' 3 9/16	18' 10 3/8
ABL96	36' 5 1/8	31' 6 9/16	21' 0 3/8
ABL97	40' 2 1/8	34' 9 9/16	23' 2 3/8
ABL98	43' 11 1/8	38' 0 1/2	25' 4 5/16
ABL99	47' 8 1/8	41' 3 1/2	27' 6 5/16
ABL00	51' 5 1/8	44' 6 7/16	29' 8 5/16
ABL01	55' 2 1/8	47' 9 7/16	31' 10 5/16
ABL02	25' 0 1/2	21' 8 1/4	14' 5 1/2
ABL03	27' 10 3/8	21' 6 3/8	14' 4 1/4
ABL04	27' 6 1/2	23' 10 1/4	15' 10 13/16
ABL05	32' 6 1/2	28' 2 3/16	18' 9 7/16
ABL06	36' 3 1/2	31' 5 3/16	20' 11 7/16
ABL07	30' 0 1/2	26' 0 3/16	17' 4 1/8
ABL08	22' 6 1/2	19' 6 1/4	13' 0 3/16
ABL09	20' 0 1/2	17' 4 1/4	11' 6 7/8
ABL10	17' 6 1/2	15' 2 5/16	10' 1 1/2
ABL11	18' 10 1/4	16' 3 15/16	10' 10 5/8
ABL12	22' 10 3/8	19' 9 5/8	13' 2 7/16
ABL13	16' 10 1/4	14' 7 3/16	9' 8 3/4
ABL14	20' 10 3/8	18' 0 13/16	12' 0 1/2
ABL15	40' 0 1/2	34' 8 1/8	23' 1 3/8
ABL16	16' 11 7/8	14' 8 9/16	9' 9 11/16



ANCHOR BOLT PROJECTION

No.	Revision Description	Date	Rev. By	Chd. By	Appr. By
R3	ADDED ABL81-ABL86	12/10/08	PJD	JM	TS
R2	REVISED NOTE 2 & ADDED ABL82B-ABL83	8/20/09	WEB	WCU	TS
R1	REV'D. PLAN VIEW, ADDED TO NOT'S. ABL822-ABL825	4-14-08	KTL	RKB	TS

R O H N

Section	NAME	By	Date	Title
Drawn	WCU	WCU	6/15/08	
Checked	KTL	KTL	7-21-08	
App. Eng.	TS	TS	7-29-08	
App. Supt.	AE	AE	7-29-08	

8 HOLE ANCHOR BOLT LAYOUT

DRAWING NO.: **C880727 R3**

NOTES

- FOR ANCHOR AND FOUNDATION TOLERANCES REFER TO THE LATEST REVISION OF DWG. NO. AB102/14.
- ALL ANCHOR BOLTS SHALL MEET OR EXCEED REQUIREMENTS OF ASTM A354 GR BC AND ARE HOOKED 180° AT THE BOTTOM.
- WHEN FOUNDATIONS ARE DESIGNED BY OTHERS, IT SHALL BE THE RESPONSIBILITY OF THE PURCHASER'S FOUNDATION ENGINEER TO INSURE THAT THE ANCHORAGES PROVIDED ARE COMPATIBLE WITH THE PROPOSED FOUNDATION DESIGNS AND THAT THE CAPACITIES OF THE ANCHORAGES ARE NOT LIMITED BY THE STRENGTH OF THE FOUNDATIONS.
- FOR ANCHOR BOLT TEMPLATE DETAILS SEE DRAWING B73052/1.