

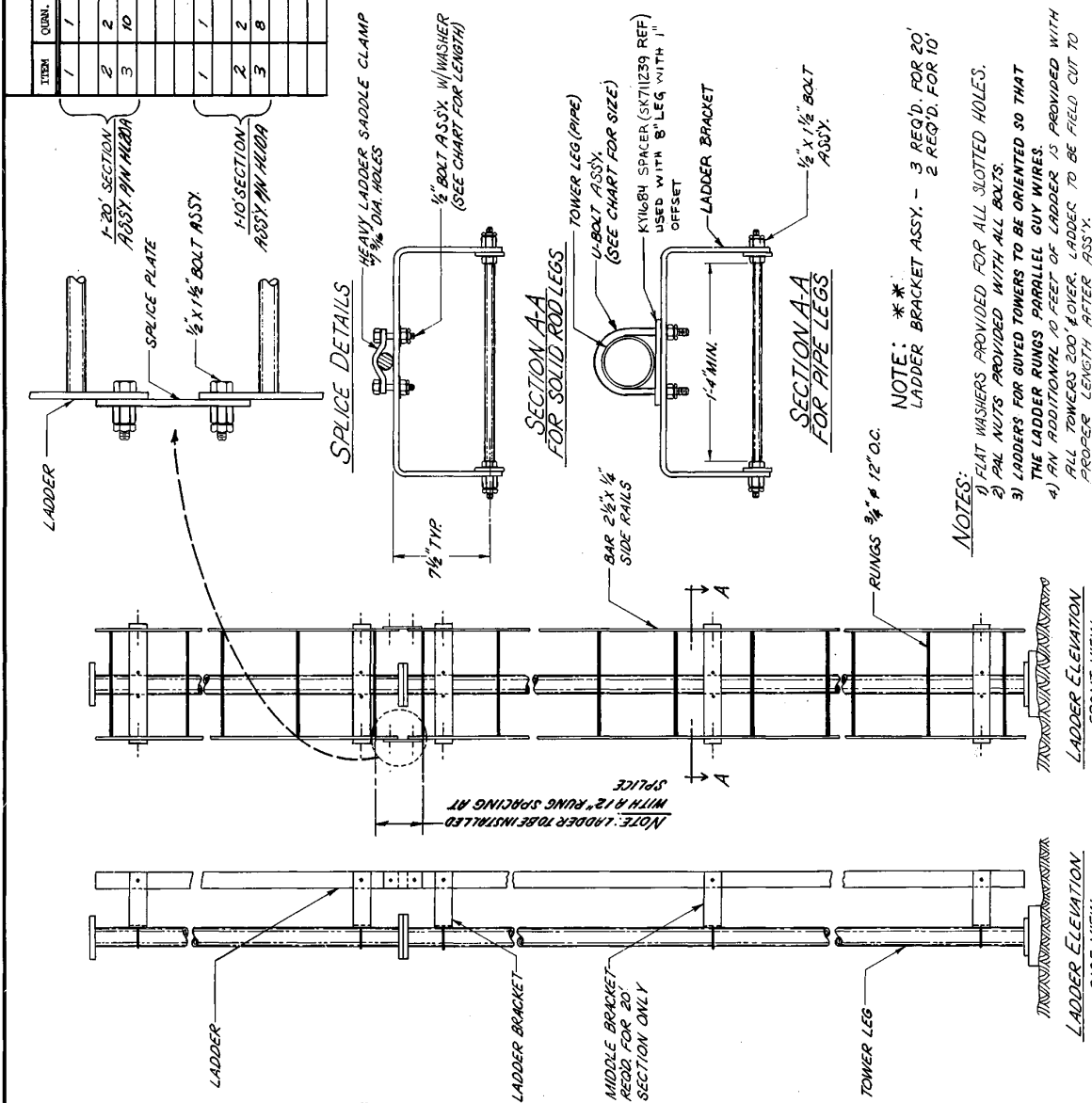


BILL OF MATERIAL			
ITEM	QTY.	PART NO.	DESCRIPTION
1	1	HL 162A	LADDER 20' LG.
2	2	KY 96	HEAVY LADDER SPLICE PLATE
3	10	2100/86A	1/2" X 1 1/2" BOLT ASSY.
1	1	HL 161A	LADDER 10' LG.
2	2	KY 96	HEAVY LADDER SPLICE PLATE
3	8	2100/86A	1/2" X 1 1/2" BOLT ASSY.

NOTE:
WHEN ORDERING LADDER YOU MUST ORDER
REQ'D QUANTITY OF LADDER MAT'L, BOLS
MOUNTING BRACKETRY TO MATCH TOWER
LEG SIZE.

LEG SIZE	U-BOLT 1 REQ'D PER BRACKET (SK711239)	U-BOLT 2 REQ'D PER BRACKET (SK711239)	WASHER 2 REQ'D PER BRACKET	LADDER BRACKET ASSEMBLY PART NO. * *
BAR 1 1/2" #	KY 71	---	1/2" X 2" - 2100206AW	KY 902
BAR 1 1/2" #	KY 71	---	1/2" X 2" - 2100216AW	KY 903
2" PIPE	KY 72	UR 83AW	1/2" X 2" - 210116AW	KY 904
2 1/4" TUBE	KY 72	UR 83AW	---	KY 905
2 1/2" PIPE	KY 71	UR 84AW	---	KY 906
3" TUBE	KY 71	UR 84AW	---	KY 906
3" PIPE	KY 71	UR 88AW	---	KY 907
3 1/2" PIPE	KY 71	UR 89AW	---	KY 908
4" PIPE	KY 71	UR 85AW	---	KY 909
5" PIPE	KY 73	UR 86A	---	KY 910
6" PIPE	KY 72	UR 87A	---	KY 911
8" PIPE	KY 73	UR 90SA	---	KY 912
10" PIPE	KY 681	JR10A	---	KY 682
12" PIPE	KY 2037	JR120A	---	KY 2037

* 1 LADDER SADDLE CLAMP REQ'D PER BRACKET



SECTION A-A FOR SOLID ROD LEGS
U-BOLT ASSY. (SEE CHART FOR SIZE)
KY1684 SPACER (SK711239 REF) USED WITH 8" LEG WITH 1" OFFSET
LADDER BRACKET
1/2" X 1 1/2" BOLT ASSY.

SECTION A-A FOR PIPE LEGS
RUNGS 1/2" # 12" O.C.
LADDER BRACKET

- NOTES:**
- 1) FLAT WASHERS PROVIDED FOR ALL SLOTTED HOLES.
 - 2) PAL NUTS PROVIDED WITH ALL BOLTS.
 - 3) LADDERS FOR GUYED TOWERS TO BE ORIENTED SO THAT THE LADDER RUNGS PARALLEL GUY WIRES.
 - 4) AN ADDITIONAL 10 FEET OF LADDER IS PROVIDED WITH ALL TOWERS 200 FEET OR OVER. LADDERS TO BE FIELD CUT TO PROPER LENGTH AFTER ASSY.
 - 5) U-BOLT PART NO. IDENTIFICATION:
UR84 - 1/2" U-BOLT ONLY
UR86A - 1/2" U-BOLT W/ NUTS & PAL NUTS
UR87AW - 1/2" U-BOLT W/ NUTS AND PAL NUTS
UR10A - 10" U-BOLT W/ NUTS AND PAL NUTS
UR2037 - 12" U-BOLT W/ NUTS AND PAL NUTS

NOTE: IT IS RECOMMENDED A ROHN-LOC SAFETY DEVICE BE PROVIDED WITH LADDER INSTALLATIONS FOR ADDED CLIMBER SAFETY.

FILE 400 PIN KY1682, KY1684 (11-20-90) WE 68AW
R 14 EN210116AW HAS 2100246AW (12-15-88) FT 1208AW (1)
R13 ADDED ROHN LOC NOTE 1 30-85 (6LJRI) ADDED LAD. BKT. ASSY. PIN & NOTE 12-15-81 WNN 1/2" ADDED AT 100 BOLT ASSY. & ASSEY 12-23-74 (4) 100

NO.	DESCRIPTION	DATE	BY
1	REVISED NOTE 4	7-18-77	WJL
2	ADD NOTE 4	7-1-75	WJL
3	ADDED BING SPACING NOTE & REVISED SPLICE PLATE	6-23-73	QJL
4	REVISED MK. NOS.	12-17-74	RDS
5	REORDERING	4-30-74	WJL

ROHN®
LADDER ASSY LEG HEAVY-DUTY

THE DRAWING IS THE PROPERTY OF ROHN. IT IS NOT TO BE REPRODUCED, COPIED, OR TRACED IN WHOLE OR IN PART WITHOUT OUR WRITTEN CONSENT.

DATE: 11-20-90
DWG. NO.: C730108
REV. 16

PRINTED IN U.S.A.