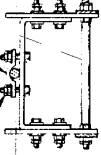




### BILL OF MATERIAL

| ITEM QTY | PART NO. | DESCRIPTION                                     | DWG. NO. |
|----------|----------|---|----------|
| 1        | NL20     | LADDER 20' LONG                                 | SK680905 |
| 2        | REF      | SEE CHART LADDER BRACKET HARDWARE KIT SEE CHART |          |
| 3        | K195     | SPLICE PLATE                                    | SK680905 |
| 4        | 10       | 2000RGA 1/2" X 1 1/2" BOLT ASSY                 | 0770404  |
| 5        | 12       | 2000GAM 1/2" X 1 3/4" BOLT ASSY W/ WASHER       | 0770404  |
| 6        | 18       | 2500G16 1/2" FLAT WASHER                        | SK680905 |
| 1        | NL10     | LADDER 10' LONG                                 | SK680905 |
| 2        | REF      | SEE CHART LADDER BRACKET HARDWARE KIT SEE CHART |          |
| 3        | K195     | SPLICE PLATE                                    | SK680905 |
| 4        | 10       | 2000RGA 1/2" X 1 1/2" BOLT ASSY                 | 0770404  |
| 5        | 12       | 2000GAM 1/2" X 1 3/4" BOLT ASSY W/ WASHER       | 0770404  |
| 6        | 18       | 2500G16 1/2" FLAT WASHER                        | SK680905 |

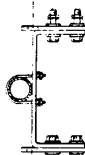
1/8" X 4" BOLT ASSY W/ WASHER  
STD. LADDER SADDLE CLAMP (P/N KH323)



SECTION A-A  
(VIEW NO. 1)  
FOR: 1/2" THRU 3.0" LEGS

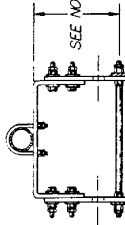
SEE DETAIL 'B'

1/2" X 1 1/2" BOLT ASSY W/ WASHERS BOTH SIDS (TYP. FOR ALL EXT. E'S)



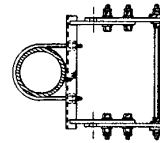
SECTION A-A  
(VIEW NO. 2)  
FOR: 3" AND 3 1/2" PIPE

FOR: 3" AND 3 1/2" PIPE  
4" PIPE, TOP AND INTERMEDIATE BRACKET  
6" PIPE, TOP AND INTERMEDIATE BRACKET  
8" PIPE, TOP BRACKET

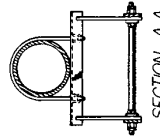


SECTION A-A  
(VIEW NO. 3)  
FOR: 5" PIPE, BOTTOM BRACKET  
6" PIPE, BOTTOM BRACKET  
8" PIPE, INTERMEDIATE AND BOTTOM BRACKET

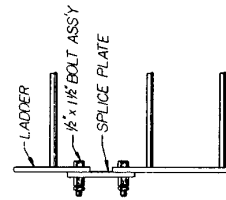
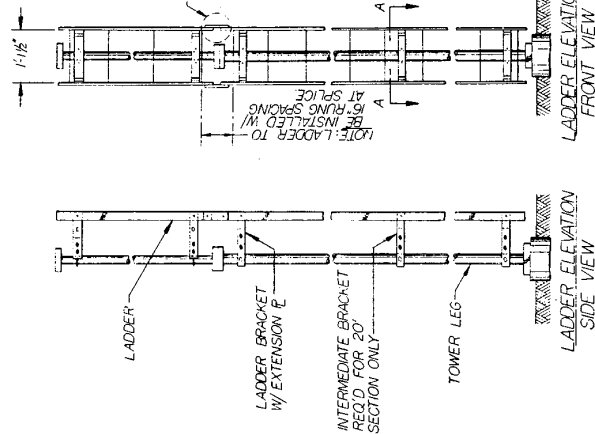
SECTION A-A  
(VIEW NO. 4)  
FOR: 10" PIPE



SECTION A-A  
(VIEW NO. 5)  
FOR: 12" PIPE



SECTION A-A  
(VIEW NO. 6)  
FOR: 12" PIPE



| LEG         | LADDER BRACKET ASSY P/N | SADDLE BRACKET P/N | U-BOLT P/N | BOLT SIZE          | LADDER EXT. PLATE VIEW NO. | SECTION A-A VIEW NO. | BRACKET FALL DWG. NO. |
|-------------|-------------------------|--------------------|------------|--------------------|----------------------------|----------------------|-----------------------|
| BAR 1/4"    | KY165                   | KH323              | JR624V     | 3/8 X 4" W/ WASHER | 2                          | 1                    | SK680905              |
| BAR 1/4"    | KY165                   | KH323              | JR624V     | 3/8 X 4" W/ WASHER | 2                          | 1                    | SK680905              |
| 2" PIPE     | KY165                   | KH323              | JR624V     | 3/8 X 4" W/ WASHER | 2                          | 1                    | SK680905              |
| 2 1/2" PIPE | KY165                   | KH323              | JR624V     | 3/8 X 4" W/ WASHER | 2                          | 1                    | SK680905              |
| 3" PIPE     | KY165                   | KH323              | JR624V     | 3/8 X 4" W/ WASHER | 2                          | 1                    | SK680905              |
| 3 1/2" PIPE | KY166                   | KH323              | JR624V     | 3/8 X 4" W/ WASHER | 2                          | 2                    | SK680905              |
| 4" PIPE     | KY167                   | KH323              | JR624V     | 3/8 X 4" W/ WASHER | 2                          | 2                    | SK680905              |
| 5" PIPE     | KY168                   | KH323              | JR624V     | 3/8 X 4" W/ WASHER | 2                          | 2                    | SK680905              |
| 6" PIPE     | KY169                   | KH323              | JR624V     | 3/8 X 4" W/ WASHER | 2                          | 2                    | SK680905              |
| 8" PIPE     | KY170                   | KH323              | JR624V     | 3/8 X 4" W/ WASHER | 2                          | 2                    | SK680905              |
| 10" PIPE    | KY171                   | KH323              | JR624V     | 3/8 X 4" W/ WASHER | 2                          | 2                    | SK680905              |
| 12" PIPE    | KY172                   | KH323              | JR624V     | 3/8 X 4" W/ WASHER | 2                          | 2                    | SK680905              |

\* NOTE: LADDER BRACKET ASSEMBLY

- GENERAL NOTES:
- 1) ALL DRAWINGS SUBMITTED ARE LATEST REVISIONS.
  - 2) FLAT WASHERS ARE PROVIDED FOR ALL SLOTTED HOLES.
  - 3) LADDERS FOR GUINED TOWERS ARE TO BE ORIENTED SO THAT THE LADDER RUNGS PARALLEL THE TOWER FACE.
  - 4) AN ADDITIONAL 10 FEET OF LADDER IS PROVIDED WITH ALL TOWERS 200' AND OVER. LADDER IS TO BE FIELD CUT TO PROPER LENGTH AFTER INSTALLATION.
  - 5) RAIL NUTS ARE PROVIDED WITH ALL BOLTS.
  - 6) THIS DIMENSION MUST BE ADJUSTED TO KEEP THE LADDER SIDE RAIL IN A CENTER RING SPACING.
  - 7) IT IS RECOMMENDED A RAIN-LOC SAFETY DEVICE BE PROVIDED WITH LADDER INSTALLATIONS FOR ADDED CLIMBER SAFETY.

- 1) HEAD FOR 20'  
2) HEAD FOR 10'

SEE NOTE 6.

ADD. NOTE 7  
REVISIONS  
DATE  
BY  
CHKD BY  
APP'D BY  
UNIVERSITY OF TEXAS AT AUSTIN

UNIVERSITY OF TEXAS AT AUSTIN  
LEG MOUNTED STANDARD  
LADDER ASSY

DATE: 6-1-80  
DRAWING NO.: D800041 R2