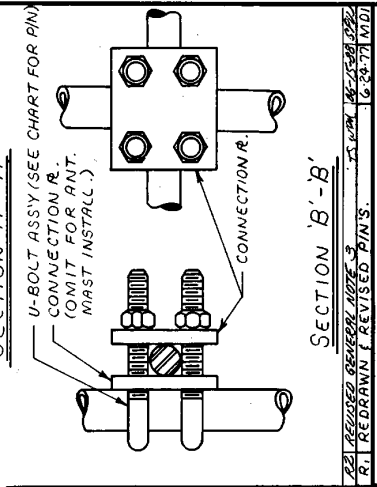


**I/W BOOM INSTALLATION FOR BOLTED SECTIONS**

**I/W BOOM INSTALLATION FOR WELDED SECTIONS**

**GENERAL NOTES**

- \* 1. ONE ANTENNA MAST KIT PROVIDED \*1 EACH BOOM ASSY. IF ADDITIONAL MAST KITS ARE REQUIRED THEY MUST BE PURCHASED SEPARATELY. SEE CHART FOR ASSY. NO. AND DATA.
2. OUTSIDE LEG OF I/W BOOM SECTION HAS BEEN OMITTED FOR CLARITY OF BOOM CONNECTIONS.
3. ALL BOOMS ARE DESIGNED TO SUPPORT A MAXIMUM THRUST OF 90 LBS. 6' FROM THE TOWER LEG AND 3' ABOVE THE BOOM ASSEMBLY.



**BILL OF MATERIAL**

ASSY. NO.	Part No.	QTY.	DESCRIPTION	Dwg. No.	Assy. No.	Part No.	QTY.	DESCRIPTION	Dwg. No.
SSV-25-68	VY 971	2	CONNECTION R.	B-710330R	VY 971	2	CONNECTION R.	B-710330R	
	VY 970	4	CONNECTION R.	B-710330R	VY 972	8	CONNECTION R.	B-710330R	
	VY 973	1	6' LG. I/W BOOM	B-770479	VY 974	1	9' LG. I/W BOOM	B-770479	
	JR81A	8	U-BOLT ASSY.	B-651028R	JR83A	4	U-BOLT ASSY.	B-651028R	
	JR83A	4	U-BOLT ASSY.	B-651028R	JR89A	1	U-BOLT ASSY.	B-651028R	
	KH 975	1	ANTENNA MAST	B-770160R	KH 975	1	ANTENNA MAST	B-770160R	
	VY 971	2	CONNECTION R.	B-710330R	VY 971	2	CONNECTION R.	B-710330R	
	VY 970	4	CONNECTION R.	B-710330R	VY 972	8	CONNECTION R.	B-710330R	
	VY 974	1	9' LG. I/W BOOM	B-770479	VY 975	1	12' LG. I/W BOOM	B-770479	
	JR81A	8	U-BOLT ASSY.	B-651028R	JR83A	4	U-BOLT ASSY.	B-651028R	
SSV-25-98	JR83A	4	U-BOLT ASSY.	B-651028R	JR89A	1	U-BOLT ASSY.	B-651028R	
	KH 975	1	ANTENNA MAST	B-770160R	KH 975	1	ANTENNA MAST	B-770160R	
	VY 971	10	CONNECTION R.	B-710330R	VY 971	2	CONNECTION R.	B-710330R	
	VY 973	1	6' LG. I/W BOOM	B-770479	VY 974	1	9' LG. I/W BOOM	B-770479	
	JR83A	12	U-BOLT ASSY.	B-651028R	JR89A	1	U-BOLT ASSY.	B-651028R	
	KH 975	1	ANTENNA MAST	B-770160R	KH 975	1	ANTENNA MAST	B-770160R	
	VY 971	10	CONNECTION R.	B-710330R	VY 972	2	CONNECTION R.	B-710330R	
	VY 973	1	6' LG. I/W BOOM	B-770479	VY 974	1	9' LG. I/W BOOM	B-770479	
	JR83A	12	U-BOLT ASSY.	B-651028R	JR89A	1	U-BOLT ASSY.	B-651028R	
	KH 975	1	ANTENNA MAST	B-770160R	KH 975	1	ANTENNA MAST	B-770160R	
SSV-67-98	VY 971	10	CONNECTION R.	B-710330R	VY 971	2	CONNECTION R.	B-710330R	
	VY 974	1	9' LG. I/W BOOM	B-770479	VY 972	8	CONNECTION R.	B-710330R	
	JR83R	12	U-BOLT ASSY.	B-651028R	VY 974	1	9' LG. I/W BOOM	B-770479	
	KH 975	1	ANTENNA MAST	B-770160R	VY 975	1	12' LG. I/W BOOM	B-770479	
	VY 971	10	CONNECTION R.	B-710330R	JR83A	12	U-BOLT ASSY.	B-651028R	
	VY 975	1	6' LG. I/W BOOM	B-770479	JR89A	1	U-BOLT ASSY.	B-651028R	
	JR83A	12	U-BOLT ASSY.	B-651028R	KH 975	1	ANTENNA MAST	B-770160R	
	KH 975	1	ANTENNA MAST	B-770160R	VY 971	10	CONNECTION R.	B-710330R	
	VY 971	10	CONNECTION R.	B-710330R	VY 974	1	9' LG. I/W BOOM	B-770479	
	VY 974	1	9' LG. I/W BOOM	B-770479	JR83R	12	U-BOLT ASSY.	B-651028R	
SSV-67-128	JR83R	12	U-BOLT ASSY.	B-651028R	VY 971	10	CONNECTION R.	B-710330R	
	VY 971	10	CONNECTION R.	B-710330R	VY 974	1	9' LG. I/W BOOM	B-770479	
	VY 975	1	6' LG. I/W BOOM	B-770479	JR83R	12	U-BOLT ASSY.	B-651028R	
	JR83A	12	U-BOLT ASSY.	B-651028R	VY 971	10	CONNECTION R.	B-710330R	
	KH 975	1	ANTENNA MAST	B-770160R	VY 974	1	9' LG. I/W BOOM	B-770479	
	VY 971	10	CONNECTION R.	B-710330R	JR83A	12	U-BOLT ASSY.	B-651028R	
	VY 975	1	6' LG. I/W BOOM	B-770479	JR89A	1	U-BOLT ASSY.	B-651028R	
	JR83A	12	U-BOLT ASSY.	B-651028R	KH 975	1	ANTENNA MAST	B-770160R	
	KH 975	1	ANTENNA MAST	B-770160R	VY 971	10	CONNECTION R.	B-710330R	
	VY 971	10	CONNECTION R.	B-710330R	VY 974	1	9' LG. I/W BOOM	B-770479	
SSV-7-158	VY 974	1	9' LG. I/W BOOM	B-770479	VY 971	10	CONNECTION R.	B-710330R	
	JR83A	12	U-BOLT ASSY.	B-651028R	VY 974	1	9' LG. I/W BOOM	B-770479	
	KH 975	1	ANTENNA MAST	B-770160R	JR83A	12	U-BOLT ASSY.	B-651028R	
	VY 971	10	CONNECTION R.	B-710330R	JR89A	1	U-BOLT ASSY.	B-651028R	
	VY 974	1	9' LG. I/W BOOM	B-770479	KH 975	1	ANTENNA MAST	B-770160R	
	JR83A	12	U-BOLT ASSY.	B-651028R	VY 971	10	CONNECTION R.	B-710330R	
	KH 975	1	ANTENNA MAST	B-770160R	VY 974	1	9' LG. I/W BOOM	B-770479	
	VY 971	10	CONNECTION R.	B-710330R	JR83A	12	U-BOLT ASSY.	B-651028R	
	VY 974	1	9' LG. I/W BOOM	B-770479	JR89A	1	U-BOLT ASSY.	B-651028R	
	JR83A	12	U-BOLT ASSY.	B-651028R	KH 975	1	ANTENNA MAST	B-770160R	

**Unarco-Rohn**  
Division of Unarco Industries, Inc.

**I/W BOOM INSTALLATIONS**

Scale: NONE  
 Drawn by: MDI  
 Checked by: JYD  
 Approved by: [Signature]  
 Date: 6-29-77

Unless otherwise specified, dimensions are given in inches.  
 Fractions ±  
 Decimals ±  
 Material ±  
 Finish ±  
 Angles ±  
 Weight ±

Part No. 6-24-77 (MDI)  
 Revision Description: R1 REDRAWN & REVISED PINS.  
 Date: 6-24-77  
 By: [Signature]

Approved by: [Signature]  
 Date: 6-28-77

Drawing Number: C-710348 R2