

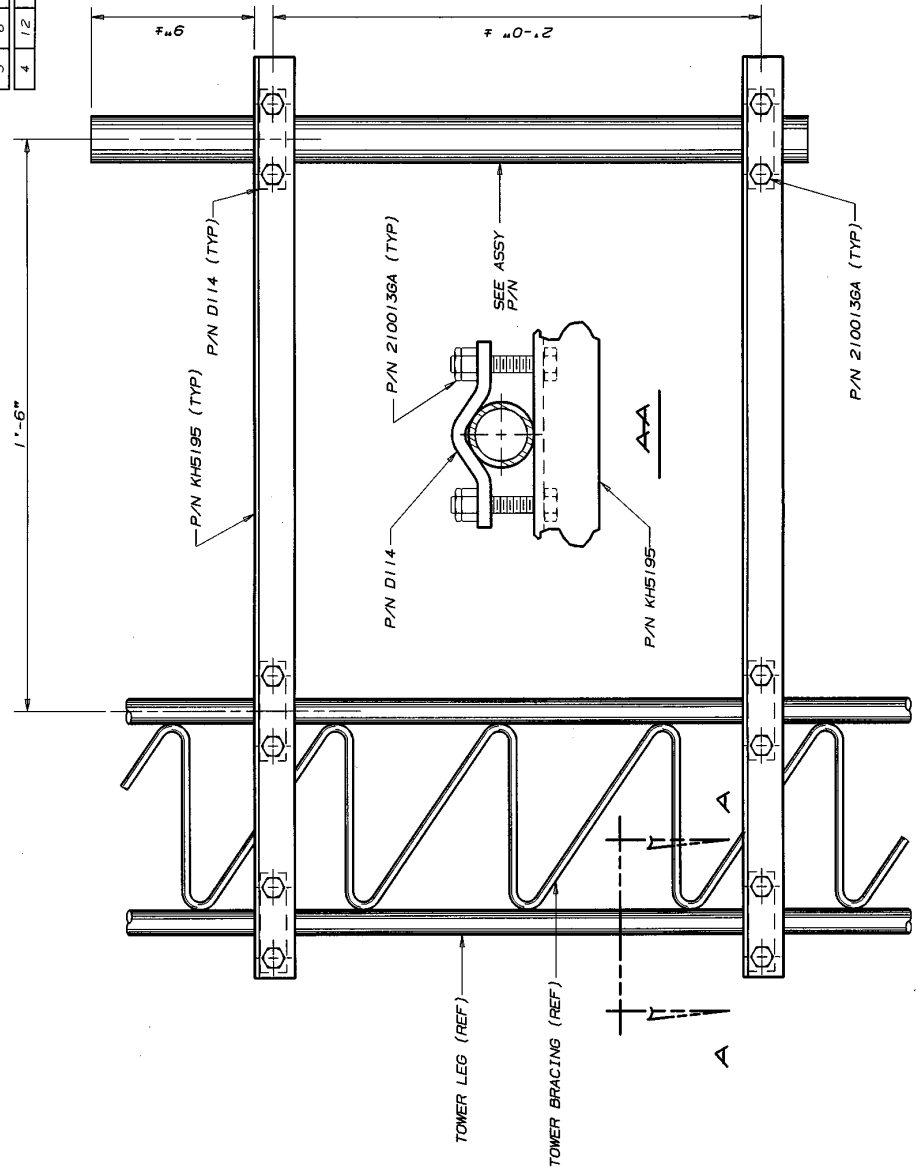


BILL OF MATERIAL				
ITEM	QTY	PART NO.	DESCRIPTION	DWG. NO.
1	1	SEE ASSY P/N	MOUNTING PIPE OR TUBE	N/A
2	2	KH5195	MOUNTING ANGLE L 2X3/16	B951772
3	6	D114	SADDLE CLAMP	B770214
4	12	2100136A	3/8x4 BOLT ASSY	N/A

ASSY P/N: KY206BA2 (2STD PIPE)
 (PIPE 2STD X 3' LG.)
 (P/N KH475)

ASSY P/N: KY206BA15 (TUBE 1.5"Ø)
 (TUBE 1.5"Ø X 3' LG.) (0.065" WALL)
 (P/N KY2065) (WT: 3.2#)

ASSY P/N: KY206BA16 (TUBE 1.66"Ø)
 (TUBE 1.66"Ø X 3' LG.) (0.065" WALL)
 (P/N KY2010) (WT: 3.6#)



NOTE: THIS SIDE ARM IS DESIGNED FOR AN ALLOWABLE LOADING OF 100 LBS LATERAL THRUST TOTAL TOWER LOAD MUST NOT EXCEED CAPACITY OF 256 TOWER.

NOTE: OUTSTANDING LEG OF TOWER HAS BEEN OMITTED FOR CLARITY

NOTE: MOUNTING ANGLE MUST BE MOUNTED AS CLOSE TO LEG/BRACE INTERSECTION AS POSSIBLE.

No. ▲ Revision Description		▲ Date ▲ Rev. By ▲ Chd. By ▲ App'd By	
THIS DRAWING IS THE PROPERTY OF ROHN, IT IS NOT TO BE REPRODUCED OR TRANSMITTED IN ANY FORM OR BY ANY MEANS, WITHOUT OUR WRITTEN CONSENT.			
Scale: NONE	By: JDM	Date: 5-15-95	ROHN
Drawn: JDM	Checked: WJM	Date: 5-20-95	
App. Eng.: JZ	App. Eng.: JZ	Date: 5-30-95	
App. Select: DL	App. Select: DL	Date: 5-30-95	
Title: 256 DISH MOUNT ASSY		DRAWING NO.: C950981	