



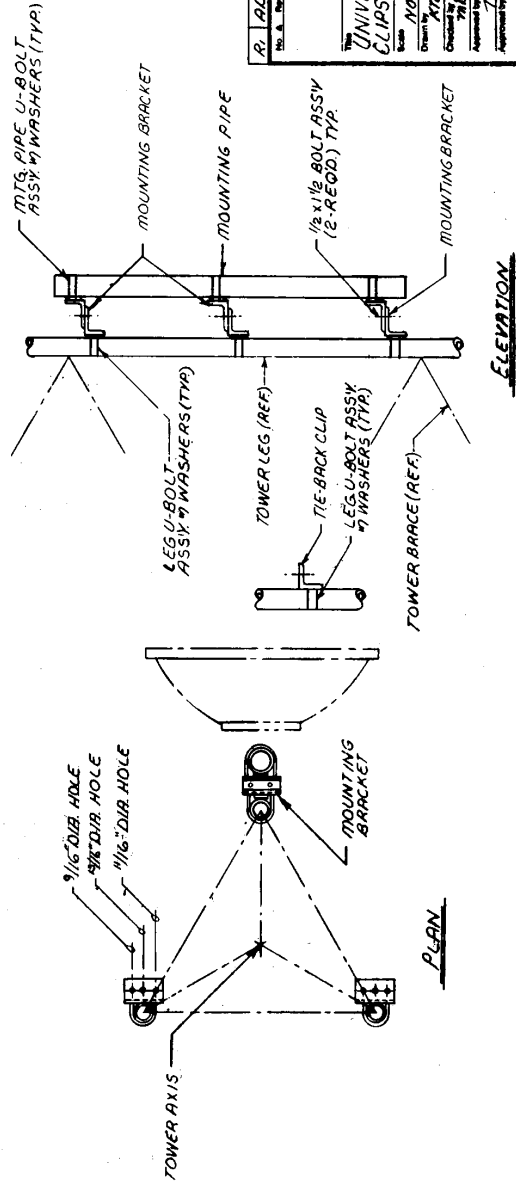
GENERAL NOTES

1. MOUNTING BRACKETS MUST BE MOUNTED AS CLOSE TO BRACE CLIP AS POSSIBLE.
2. FOR MOUNTING BRACKET FABRICATION SEE DWG. NO. 8800005.
3. FOR U-BOLT FABRICATION SEE DWG. NO. 8651028 R0.
4. FOR MOUNTING PIPE FABRICATION SEE DWG. NO. 8770160 R2.
5. FOR TIE-BACK CLIP ANGLE FABRICATION SEE DWG. NO. 8800104 R1.

DISH MOUNTS 7/8" MOUNTING PIPE 4" STD. x 10'-0" LG. 7/8" TIE-BACK CLIPS				
ASSY. PIN	TOWER LEG PIPE SIZE	MOUNTING BRKT. PIN (6-REQ'D)	TIE-BACK CLIP P/N (2-REQ'D)	MOUNTING PIPE PIN (1-REQ'D)
ST820LUM	2 STD. or 2 X-STR	VY1627	VY1653	KH291
ST825LUM	2 1/2 STD. or 2 1/2 X-STR	VY1627	VY1653	KH291
ST830LUM	3 STD. or 3 X-STR	VY1627	VY1653	KH291
ST835LUM	3 1/2 STD. or 3 1/2 X-STR	VY1627	VY1653	KH291
ST840LUM	4 STD. or 4 X-STR	3-VY1627	VY1654	KH291
ST850LUM	5 STD. or 5 X-STR	3-VY1627	VY1654	KH291
ST860LUM	6 STD. or 6 X-STR	3-VY1627	VY1654	KH291

DISH MOUNTS 7/8" MOUNTING PIPE 4" STD. x 10'-0" LG.				
ASSY. PIN	TOWER LEG PIPE SIZE	MOUNTING BRKT. PIN (6-REQ'D)	CONNECTION BOLT ASSY. 7/8" x 1/2 (6-REQ'D)	MOUNTING PIPE PIN (1-REQ'D)
S20LUM	2 STD. or 2 X-STR	VY1627	210018GA	KH291
S30LUM	3 STD. or 3 X-STR	VY1627	210018GA	KH291
S35LUM	3 1/2 STD. or 3 1/2 X-STR	VY1627	210018GA	KH291
S50LUM	5 STD. or 5 X-STR	3-VY1627	210018GA	KH291
S60LUM	6 STD. or 6 X-STR	3-VY1627	210018GA	KH291

NOTE: FLAT WASHERS PROVIDED FOR ALL SLOTTED HOLES.



UNARCO-ROHN
 9700 W. 11th Street, Omaha, Nebraska 68114
 402-491-1111

UNIVERSAL LEG DISH MOUNTS & TIE-BACK CLIPS FOR STRAIGHT TOWER SECTIONS

Order No. 8800104 R1

Part No. 8800104 R1

Rev. 3-12-80

Approved by: [Signature]

Checked by: [Signature]

Drawn by: [Signature]

Scale: 3/4" = 1'-0"

Project: [Blank]

Job No.: [Blank]

Sheet No.: 3 of 3

Customer: [Blank]

GP 8800104 R1