



DMF310401			BILL OF MATERIAL		
ITEM	QTY	DESC	ITEM	QTY	DESC
1	1	K1279	MTS PIPE (4.500 X 1.88 X 5.0) (L)	1	8770160
2	2	V12329	MOUNTING PLATE	2	8800042
3	1	V12240	ANGLE TUBE MOUNT	1	8801450
4	1	V12241	ANGLE TUBE MOUNT	1	8801450
5	1	V12277	ANGLE TUBE MOUNT	1	8801507
6	1	V12278	ANGLE TUBE MOUNT	1	8801508
7	4	JR85A	U-BOLT ASSY	4	8801274
8	12	JR81A	SO U-BOLT ASSY	12	8801460

DMF310681			BILL OF MATERIAL		
ITEM	QTY	DESC	ITEM	QTY	DESC
1	1	K1295	MTS PIPE (4.500 X 1.88 X 5.0) (L)	1	8770160
2	2	V12329	MOUNTING PLATE	2	8800042
3	1	V12240	ANGLE TUBE MOUNT	1	8801450
4	1	V12241	ANGLE TUBE MOUNT	1	8801450
5	1	V12277	ANGLE TUBE MOUNT	1	8801507
6	1	V12278	ANGLE TUBE MOUNT	1	8801508
7	4	JR85A	U-BOLT ASSY	4	8801274
8	12	JR81A	SO U-BOLT ASSY	12	8801460

DMF31001			BILL OF MATERIAL		
ITEM	QTY	DESC	ITEM	QTY	DESC
1	1	K1230	MTS PIPE (4.500 X 1.88 X 5.0) (L)	1	8770160
2	2	V12329	MOUNTING PLATE	2	8800042
3	1	V12240	ANGLE TUBE MOUNT	1	8801450
4	1	V12241	ANGLE TUBE MOUNT	1	8801450
5	1	V12277	ANGLE TUBE MOUNT	1	8801507
6	1	V12278	ANGLE TUBE MOUNT	1	8801508
7	4	JR85A	U-BOLT ASSY	4	8801274
8	12	JR81A	SO U-BOLT ASSY	12	8801460

DMF31051			BILL OF MATERIAL		
ITEM	QTY	DESC	ITEM	QTY	DESC
1	1	K1295	MTS PIPE (4.500 X 1.88 X 5.0) (L)	1	8770160
2	2	V12329	MOUNTING PLATE	2	8800042
3	1	V12240	ANGLE TUBE MOUNT	1	8801450
4	1	V12241	ANGLE TUBE MOUNT	1	8801450
5	1	V12277	ANGLE TUBE MOUNT	1	8801507
6	1	V12278	ANGLE TUBE MOUNT	1	8801508
7	4	JR85A	U-BOLT ASSY	4	8801274
8	12	JR81A	SO U-BOLT ASSY	12	8801460

**Unarco-Rohn**  
Division of Unarco Industries, Inc.

UNARCO-ROHN DIVISION OF UNARCO INDUSTRIES, INC.  
11000 W. 10TH AVENUE, DENVER, CO 80202  
TELEPHONE: 303-751-1200  
FAX: 303-751-1201

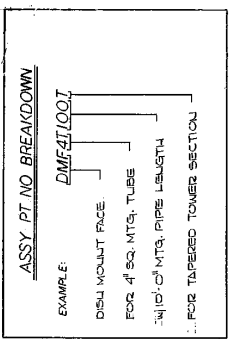
DATE: 8/18/82  
BY: [Signature]

PROJECT: MOUNT DISH ASSY FACE 1.5" TAP  
DRAWING NO: D820148

DMF471001			BILL OF MATERIAL		
ITEM	QTY	DESC	ITEM	QTY	DESC
1	1	K1230	MTS PIPE (4.500 X 1.88 X 5.0) (L)	1	8770160
2	2	V12329	MOUNTING PLATE	2	8800042
3	1	V12240	ANGLE TUBE MOUNT	1	8801450
4	1	V12241	ANGLE TUBE MOUNT	1	8801450
5	1	V12277	ANGLE TUBE MOUNT	1	8801507
6	1	V12278	ANGLE TUBE MOUNT	1	8801508
7	4	JR85A	U-BOLT ASSY	4	8801274
8	12	JR81A	SO U-BOLT ASSY	12	8801460

U-BOLT KITS		
LEG SIZE	U-BOLT PIN KIT ASSY PIN	PT. NO.
1 1/2" PIPE	JR83AW4	JR83AW4
2" PIPE	JR83AW	JR83AW4
2 1/2" PIPE	JR84AW	JR84AW4
3" PIPE	JR84AW	JR84AW4
3 1/2" PIPE	JR89AW	JR89AW4
4" PIPE	JR85AW	JR85AW4
5" PIPE	JR86AW	JR86AW4



**ASSY PT. NO. BREAKDOWN**

EXAMPLE: DMF471001

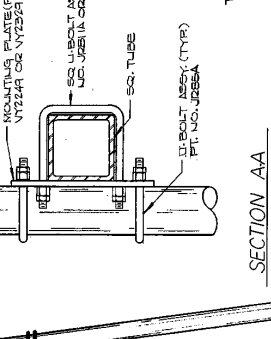
DISH MOUNT FACE  
FOR 4" SQ. MTS. PIPE  
FOR TAPERED TOWER SECTION

FACE DISH MOUNT ORDERING INFORMATION

1. U-BOLT KIT (CALL AT EA. TUBE TOP & BOTTOM)  
2. TMT4H, TMT4L, TMT4H1 OR TMT4H1 (REQD. LENGTH) (CALL AT EACH THE TOP & BOTTOM)  
(EXAMPLES: TMT4H05-4" LIGHT TUBE x 8'0" L.G.)

NOTE: TUBE LENGTHS TO BE ORDERED IN 1'-0" INCREMENTS. TOLERANCES: TS 2x3x1/8A, TMT4H DELICATES TS 4x4x25, TMT4H DELICATES TS 4x4x25, TMT4H DELICATES TS 4x4x25

NOTES: U-BOLTS ARE TO BE ORDERED BY NUMBERING ON AN INDIVIDUAL BASIS TO INCLUDE THAT THEY MEET THE SPECIFIED WIND AND DEAD LOAD REQUIREMENTS FOR VARIOUS "SIZE" ANTS



**SECTION AA**

NOTES:

1. FASTENERS ARE PROVIDED FOR ALL SLOTTED HOLES.

2. SQ. TUBES MAY BE NEEDED TOGETHER IF ADDITIONAL MTS. LENGTH IS REQD.

