



TOWER SECTION SCHEDULE											
SECTION PT. NO. ***	LEGS			FLANGE BOLTS		STEP BOLTS		BRACES		BRACE BOLTS	
	PIPE SIZE	PT. NO.	QTY.	SIZE PT. NO.	QTY.	PT. NO.	QTY.	PT. NO.	QTY.	SIZE PT. NO.	QTY.
83P	2" STD.	KL56	3	3/4 x 2 1/2 20049GA	12			KB35R KB36R	24 6	1/2 x 1/2 20018GA	33
83PS	2" STD.	KL56 KL56S	2 1	3/4 x 2 1/2 20049GA	12	5/8 STEP	16	KB35R KB36R	24 6	1/2 x 1/2 20018GA	33
83PH	2" X-STR.	KL57	3	3/4 x 2 1/2 20049GA	12			KB35R KB36R	24 6	1/2 x 1/2 20018GA	33
83PHS	2" X-STR.	KL57 KL57S	2 1	3/4 x 2 1/2 20049GA	12	5/8 STEP	16	KB35R KB36R	24 6	1/2 x 1/2 20018GA	33
84	2 1/2" STD.	KL60	3	3/4 x 2 1/2 20049GA	12			KB35R KB36R	24 6	1/2 x 1/2 20018GA	33
84S	2 1/2" STD.	KL60 KL60S	2 1	3/4 x 2 1/2 20049GA	12	5/8 STEP	16	KB35R KB36R	24 6	1/2 x 1/2 20018GA	33
84H	2 1/2" X-STR.	KL61	3	3/4 x 2 1/2 20049GA	12			KB35R KB36R	24 6	1/2 x 1/2 20018GA	33
84HS	2 1/2" X-STR.	KL61 KL61S	2 1	3/4 x 2 1/2 20049GA	12	5/8 STEP	16	KB35R KB36R	24 6	1/2 x 1/2 20018GA	33
84HC	2 1/2" X-STR.	KL159	3	3/4 x 2 1/2 20049GA	12			KB35R KB36R	18 6	1/2 x 1/2 20018GA	27
84HCS	2 1/2" X-STR.	KL159 KL159S	2 1	3/4 x 2 1/2 20049GA	12	5/8 STEP	12	KB35R KB36R	18 6	1/2 x 1/2 20018GA	27
85	3" STD.	KL64	3	7/8 x 3/2 20063GA	12			KB35R KB36R	24 6	1/2 x 1/2 20018GA	33
85S	3" STD.	KL64 KL64S	2 1	7/8 x 3/2 20063GA	12	5/8 STEP	16	KB35R KB36R	24 6	1/2 x 1/2 20018GA	33
85H	3" X-STR.	KL65	3	7/8 x 3/2 20063GA	12			KB35R KB36R	24 6	1/2 x 1/2 20018GA	33
85HS	3" X-STR.	KL65 KL65S	2 1	7/8 x 3/2 20063GA	12	5/8 STEP	16	KB35R KB36R	24 6	1/2 x 1/2 20018GA	33
85HC	3" X-STR.	KL163	3	7/8 x 3/2 20063GA	12			KB35R KB36R	18 6	1/2 x 1/2 20018GA	27
85HCS	3" X-STR.	KL163 KL163S	2 1	7/8 x 3/2 20063GA	12	5/8 STEP	12	KB35R KB36R	18 6	1/2 x 1/2 20018GA	27
* 845H	2 1/2" X-STR.	KL68	3	7/8 x 3/2 20063GA	12			KB35R KB36R	24 6	1/2 x 1/2 20018GA	33
*845HS	2 1/2" X-STR.	KL68 KL68S	2 1	7/8 x 3/2 20063GA	12	5/8 STEP	16	KB35R KB36R	24 6	1/2 x 1/2 20018GA	33

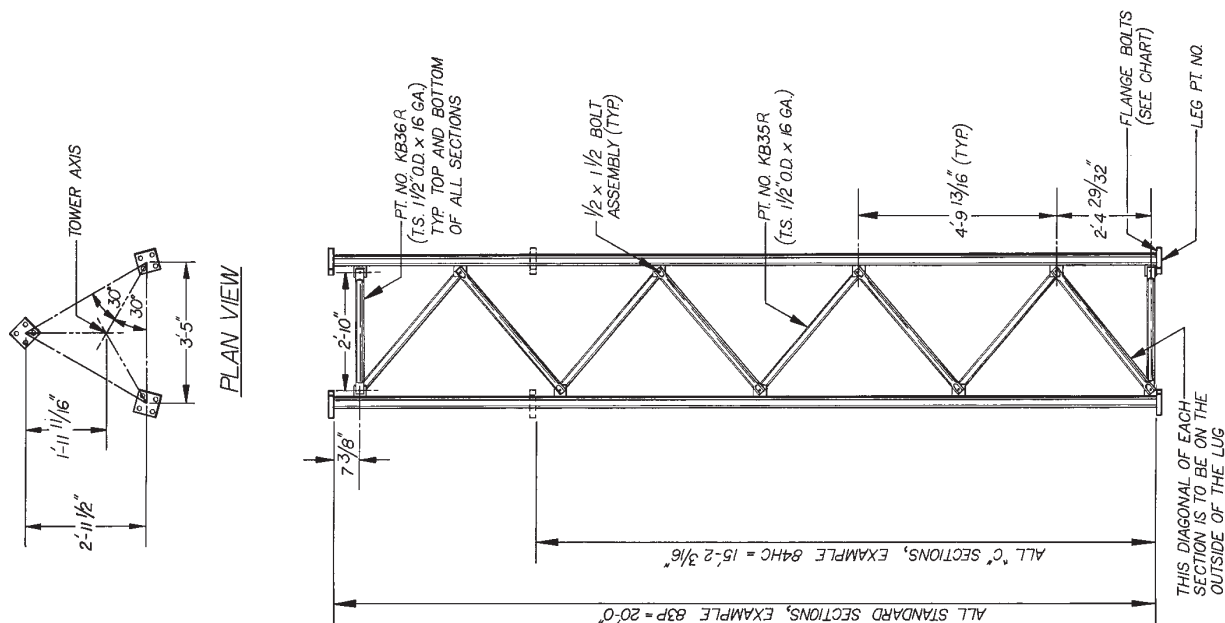
\* TRANSITION SECTION WITH 7" FLANGE PLATES AT THE BOTTOM AND 6" FLANGE PLATES AT THE TOP.

\*\* SECTION PART NUMBERS ENDING WITH AN "S" INDICATE THAT THE SECTIONS WILL HAVE STEP BOLTS ON ONE LEG FOR CLIMBING.

\*\*\* SECTION PART NUMBERS ENDING WITH AN "S" INDICATE THAT THE SECTIONS WILL HAVE STEP BOLTS ON ONE LEG FOR CLIMBING.

### GENERAL NOTES:

1. PAL NUTS ARE PROVIDED FOR ALL TOWER BOLTS.
2. FOR LEG FABRICATION, SEE DRAWINGS NUMBERED: C760013, C760014A, C760015, C760016, C760017, C760018, C760019, AND C760020.
3. FOR BRACE FABRICATION, SEE DRAWING NUMBER B660719.
4. FABRICATION DRAWINGS ARE FOR SHOP USE ONLY.



No. 1. Revision Description		Date	
R5 REVISED TOWER SECTION SCHEDULE		11-29-90 WEB	
R4 REVISED TOWER SECTION SCHEDULE		1-31-90 WEB	
R3 REDRAWN		12-9-81 AUG	

Title		Model NO 80 TOWER STANDARD SECTIONS	
Scale	NONE	Drawn by	AUG 12-9-81
Checked by	GPM	Date	12-22-81
Approved by Engineering	75	Date	12-22-81
Approved by Production		Date	
Approved by Sales	GR	Date	12-22-81
Drawing Number	C681228 R5		