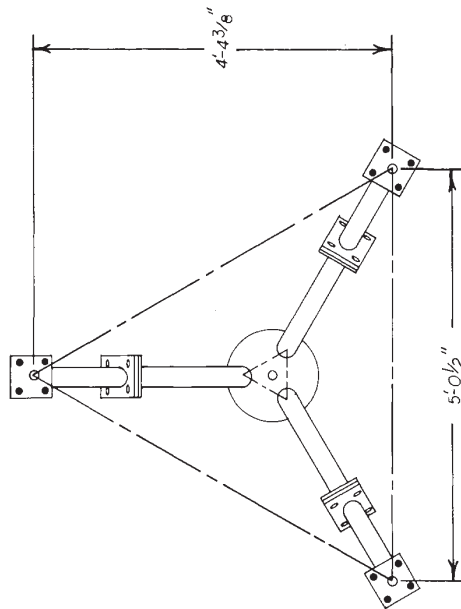
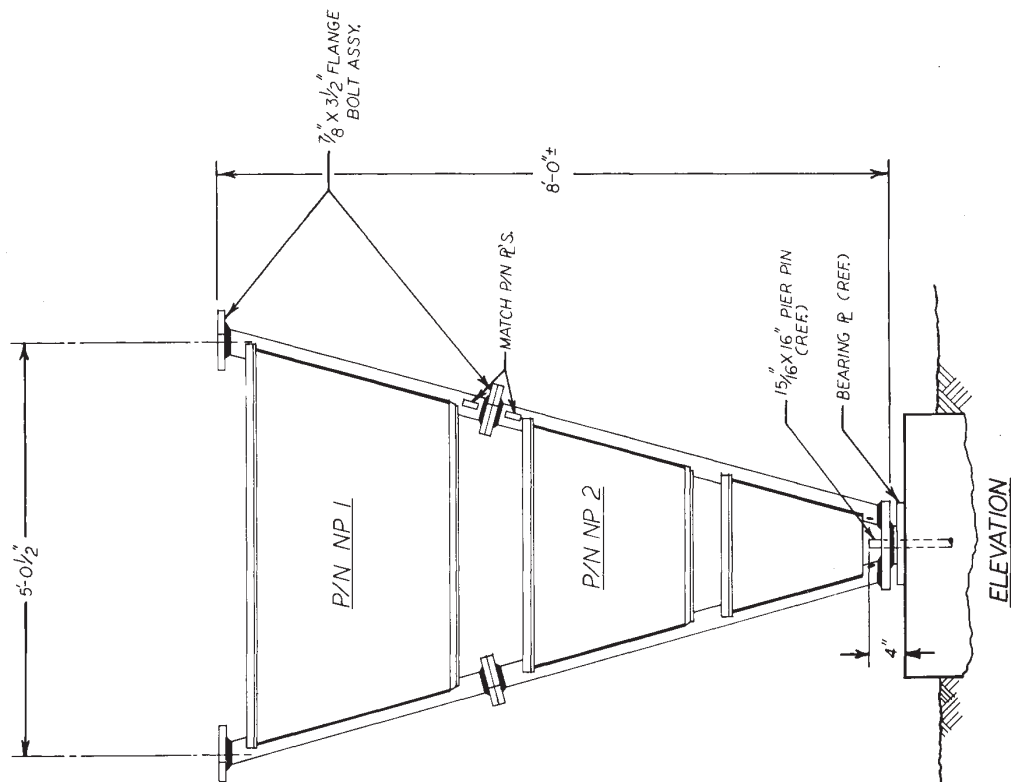




BILL OF MATERIAL			
ITEM	QTY.	PART NO.	DESCRIPTION
1	1	NP 1	UPPER BASE ASSY.
2	1	NP 2	LOWER BASE ASSY.
3	1		
4	12	2100636A	7/8 X 3 1/2 BOLT ASSY.

NOTE: MUST BE ASSEMBLED W/ IDENTICAL MATCH P/N'S  
ON THE SAME LEG.

TEMPORARY STEEL BUYING IS NECESSARY DURING INSTALLATION OR DISMANTLING.



REV	DESCRIPTION	DATE
R5	REDRAWN	1-30-85
R6	ADDED TEMP. BUYING NOTE	1-28-86

UNR-Rohn

Time  
Title  
TAPERED BASE ASSEMBLY  
FOR MODEL 90 SERIES TOWER

Drawn by: JER 12-12-72  
Checked by: WDU 2-23-73  
Approved by: CW 2-23-73  
Date: 2-23-73  
Product: 6R 2-26-73  
Drawing Number: C721215  
R6