

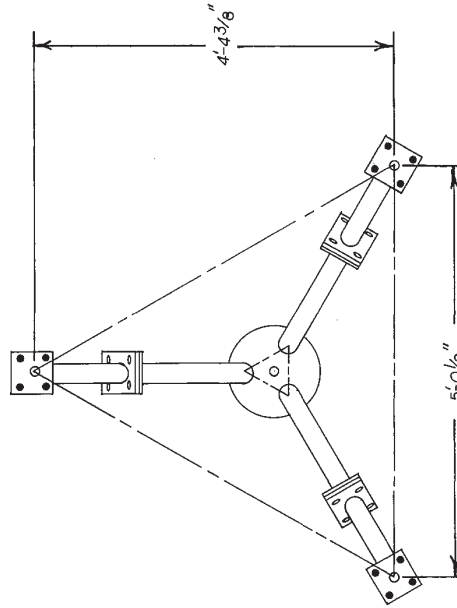
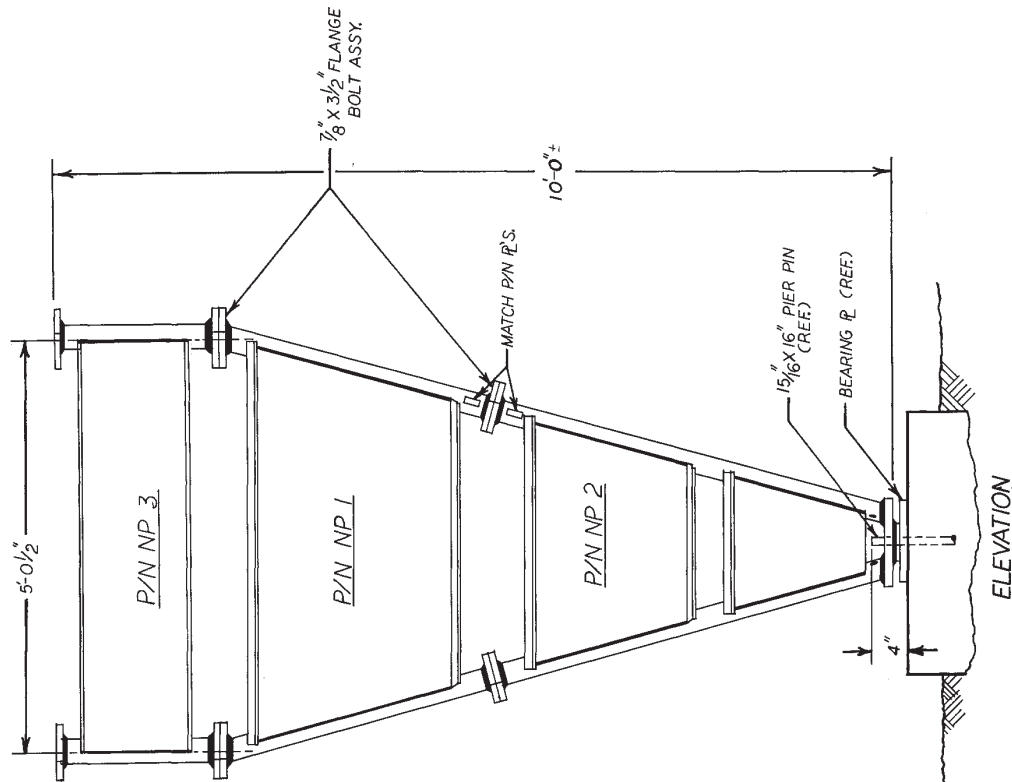


BILL OF MATERIAL			
ITEM	QTY	PART NO.	DESCRIPTION
1	1	NP 1	UPPER BASE ASSY.
2	1	NP 2	LOWER BASE ASSY.
3	1	NP 3	BASE EXTENSION
4	24	2100636A	7/8 X 3 1/2 BOLT ASSY

DWG. NO.  
C721216  
"  
C730308  
C770404

**NOTE:** MUST BE ASSEMBLED W/ IDENTICAL MATCH P/N'S  
ON THE SAME LEG.

TEMPORARY STEEL GUYING IS NECESSARY DURING INSTALLATION OR DISMANTLING.



R 6 ADDED TEMP GUYING NOTE		11-3-86	P187
R 5 REDRAWN		1-30-85	GLJ
No.	Revision Description	Date	By

UNR-Rohn  
Division of UNR, Inc.

Title  
**TAPERED BASE ASSEMBLY  
FOR MODEL 90 SERIES TOWER**

Scale	Unless otherwise specified, dimensions are given in inches.			
Drawn by	WDU	Date	3-14-73	
Checked by	TS	Date	3-14-73	
Approved by Engineering	CW	Date	3-14-73	
Approved by Production		Date		
Approved by Sales	GR	Date	3-14-73	

Drawing Number  
**C730307**  
R6