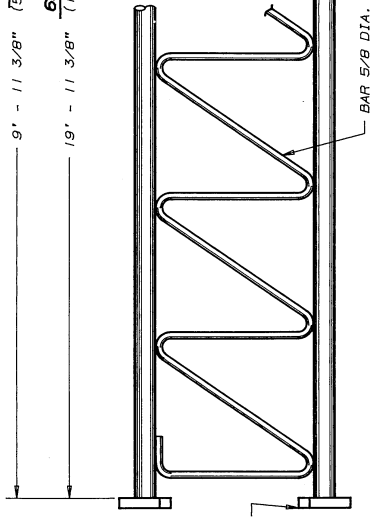
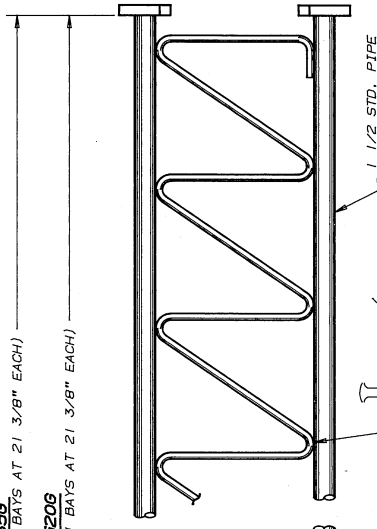
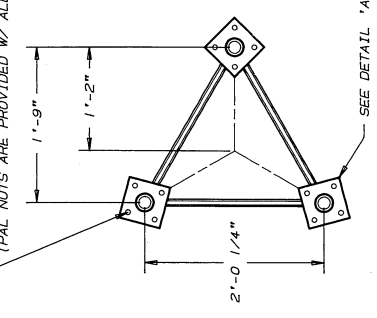


P/N 651G SECTION

DETAIL 'A'

(4) 5/8\"/>



NOTE: ALL SECTIONS CAN BE INSTALLED WITH EITHER END UP, EXCEPT FOR 651G SECTION; ALL CONNECTIONS ARE HOT DIP GALVANIZED AFTER FABRICATION.

P/N 65G SECTION AND P/N 6520G SECTION

SEC. >>	65G TOWER SECTION PROPERTIES		SECTION
	LEGS	BRACES	
SIZE	PIPE 1.50 STD.	BAR 5/8 DIA.	N/A
Fy	50.0	36.0	N/A
A	0.799	0.3088	2.40
S	0.326	0.0240	15.71
I	0.310	0.0075	234.9
r	0.623	0.1563	9.90
L	21.4	30.9	VARIES
K	1.0	0.70	1.0
KL/r	34.3	138.4	VARIES
C	28.3	3.20	N/A
T	28.3	N/A	N/A
M	N/A	N/A	49.5
W	2.72	1.044	14.50
Ws	164.0	126.0	290.0

NOMENCLATURE

- A = CROSS SECTIONAL AREA (SQUARE INCHES)
- C = COMPRESSION CAPACITY WITH 1/3 INCREASE IN ALLOWABLE STRESS (KIPS)
- I = MOMENT OF INERTIA ABOUT CENTROIDAL AXIS (INCHES**4)
- Fy = YIELD STRESS (TENSILE) (KIPS/INCH**2)
- K = EFFECTIVE LENGTH FACTOR (DIMENSIONLESS)
- L = UNBRACED LENGTH (INCHES)
- M = MOMENT CAPACITY WITH 1/3 INCREASE IN ALLOWABLE STRESS (FT.-KIPS)
- N/A = NOT APPLICABLE
- S = ELASTIC SECTION MODULUS (INCHES**3)
- T = TENSILE CAPACITY WITH 1/3 INCREASE IN ALLOWABLE STRESS (KIPS)
- r = RADIUS OF GYRATION (INCHES)
- W = WEIGHT PER FOOT (POUNDS)
- Ws = WEIGHT PER SECTION (POUNDS)

NOTE: CAPACITIES SHOWN ARE BASED ON ANSI/AIA-222-E-1991

UNR-Rohn

65G SECTION ASSEMBLY

Scale: NONE

Drawn by: GPW Date: 02/18/89

Checked by: WJG Date: 2-24-89

Approved by Engineering: EJM Date: 2-24-89

Approved by Production: Date: File Number:

Approved by Sites: Date: Drawing Number: C630665 R14

2-23-88

Revision Description: R13 REDRAWN AND REVISED SPEC. R14 REV'D EIA-222-E-1991 TO EIA-222-E-1991 9/10/91 RKB