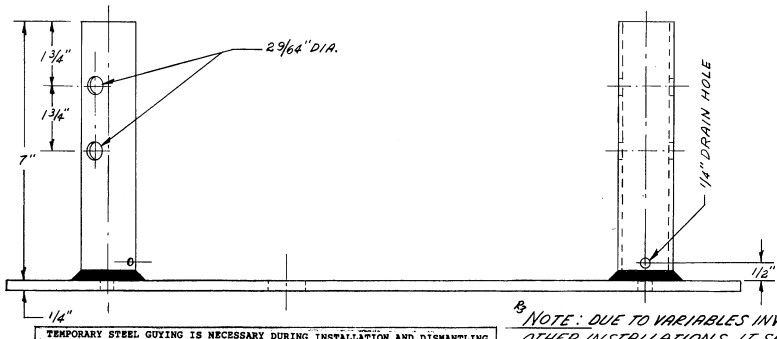
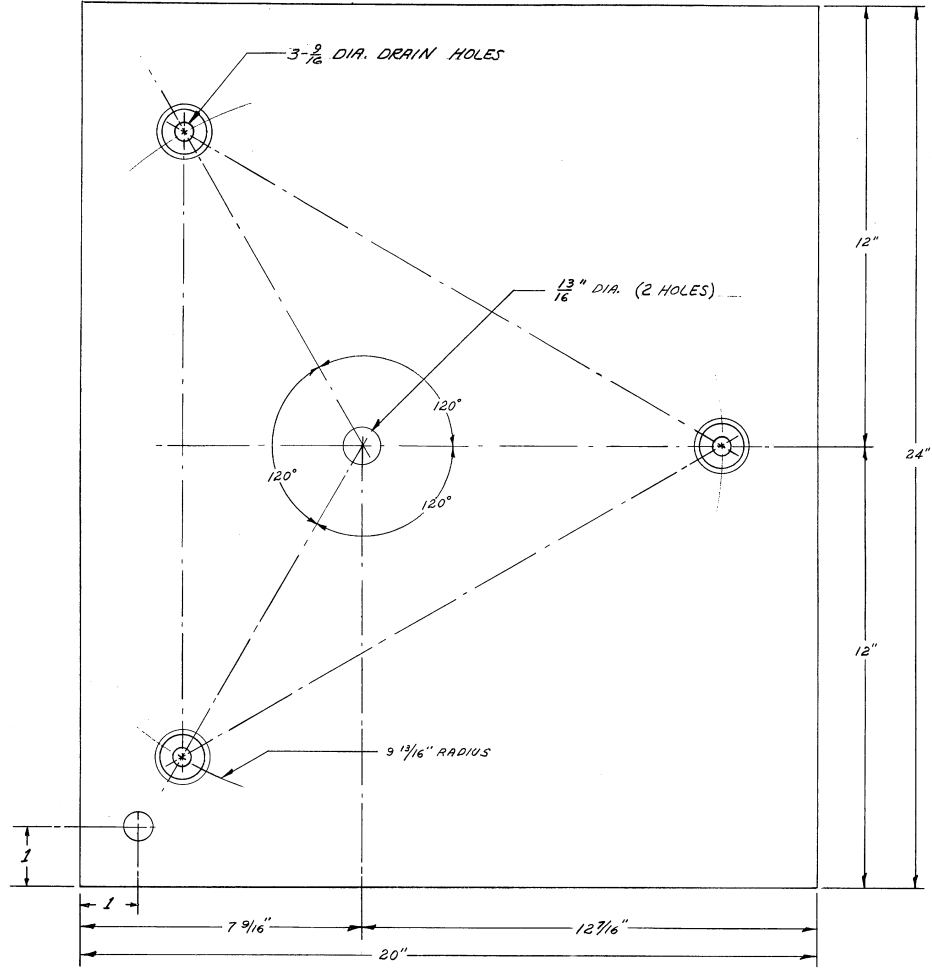




C640655-R5



NOTE:
AFTER GALVANIZING, CHECK DRAIN HOLES TO SEE THAT THEY ARE NOT PLUGGED.

NOTE:®
FOR USE WITH GUYED AND BRACKETED TOWERS ONLY.

BASE PLATE FOR CONCRETE PIER
(PART NO. BPC556)

NOTE: DUE TO VARIABLES INVOLVED IN ROOF AND OTHER INSTALLATIONS, IT SHALL BE THE CUSTOMER'S OR INSTALLER'S RESPONSIBILITY TO PROVIDE STRUCTURALLY ADEQUATE SUPPORTS FOR PIER & ANCHOR CONNECTIONS. IT MAY ALSO BE NECESSARY FOR THE CUSTOMER OR INSTALLER TO SECURE THE SERVICE OF A LOCAL ENGINEER TO DETERMINE THAT INSTALLATION COMPLIES WITH LOCAL BUILDING CODES.

DRAWN BY: <i>BJEN/DM</i>		CUSTOMER:	TITLE:
REV. 12-5-88	ED/DA	ROHN MANUFACTURING	BASE PLATE FOR MODEL 55 TOWER
REV. 11-3-86	REV. 1	PEORIA, ILLINOIS	DRAWING NO. C640655-R5
REV. 5-31-78	REV. 2		
REV. 7-6-74	REV. 3		
REV. 11-3-75	REV. 4		
REV. 1-31-74	REV. 5		
DATE: 6-30-64		SCALE:	
APPROVED: <i>DM</i>			
CHECKED: <i>DM</i>			